



Cuyahoga County Division of Children and Family Services  
Patricia L. Rideout, Administrator

# **Year End Statistical Report**

## **January - December 2013**

**Division of Children & Family Services, 3955 Euclid Ave., Cleveland, OH 44115 (216) 431-4500**

TDD: Ohio Relay Service # is 1-800-750-0750 {NOTE: For questions about this report, you may call (216) 881-4125}

June 2014

DCFS: Performance Management Unit

## DCFS YEAR END STATISTICAL REPORT

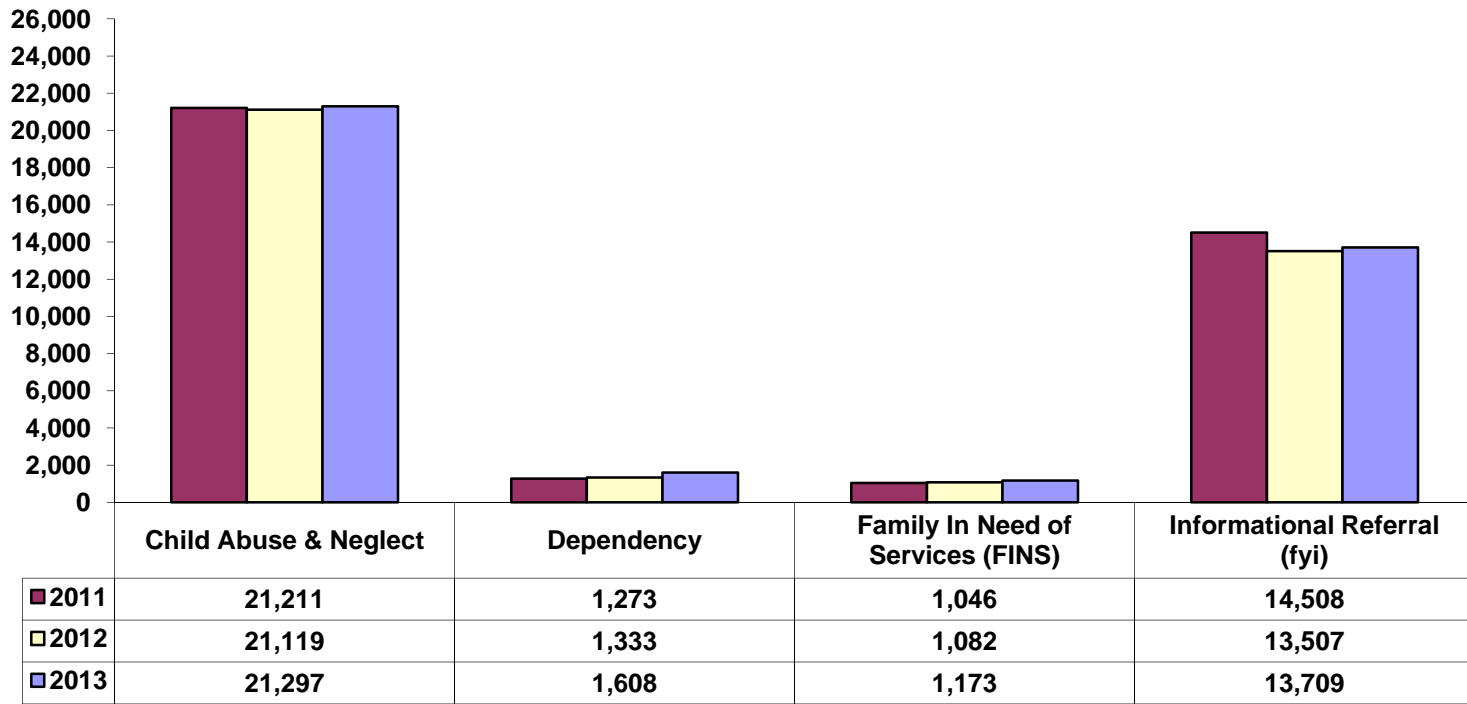
### TABLE OF CONTENTS

REFERRALS BY CATEGORY-----	1
SCREENED IN / SCREENED OUT REFERRALS BY INTAKE CATEGORY-----	2
SCREENED IN CHILD ABUSE & NEGLECT REFERRALS BY ALLEGATION TYPE-----	3
TIME TO CASE DISPOSITION / SCREENED-IN CHILD ABUSE & NEGLECT REFERRALS-----	4
CASE DISPOSITIONS / SCREENED IN AND DISPOSED CHILD ABUSE & NEGLECT REFERRALS-----	5
POSITIVE TOX REFERRALS-----	6
AVERAGE MONTHLY NEW CASE ASSIGNMENTS INTAKE-----	7
AVERAGE MONTHLY TOTAL CASELOAD INTAKE-----	8
AVERAGE MONTHLY TOTAL CASELOAD ONGOING-----	9
AVERAGE MONTHLY TOTAL CASELOAD ADOPTIONS-----	10
INITIAL CUSTODY STAFFING RECOMMENDATIONS-----	11
CHILDREN ENTERING CUSTODY / CHILDREN WITH PREVIOUS CUSTODY EPISODES-----	12
CUSTODY ENTRIES BY RACE / GENDER / AGE-----	13
CUSTODY TRANSITIONS-----	14
CHILDREN RECEIVING SERVICES ON OPEN CASES-----	15
CHILDREN IN PLACEMENT BY PLACEMENT TYPE-----	16
FACE - TO - FACE CASE WORKER - CHILD CONTACTS -----	17
IN COUNTY / CONTIGUOUS COUNTY / OUT OF COUNTY / OUT OF STATE PLACEMENTS -----	18
CUSTODY TERMINATIONS BY TYPE COMPARED WITH INITIAL CUSTODIES-----	19
CHILDREN IN PERMANENT CUSTODY BY AGE-----	20
CHILDREN EXITING CARE BY AGE OF MAJORITY: FINAL CUSTODY TYPE / AGE AT ENTRY / LENGTH OF EPISODE-----	21

#### **ABOUT THIS REPORT:**

Except where noted the source for all data used in this report is the Ohio Statewide Automated Child Welfare Information System (SACWIS) as of the last day of the reporting period. CCDCFS converted to this system on December 9th of 2008. Prior to that date the source was the Cuyahoga County FACTS system. Within SACWIS data are categorized and collected differently making comparisons of SACWIS data to historic FACTS data impractical. In SACWIS both current and historical data may be subject to change as it is continually being corrected and updated. This may cause statistics found in previous reports to be inconsistent with statistics found in more recent reports, even when the data pertains to the same time period.

**REFFERALS BY CATEGORY  
JANUARY - DECEMBER  
2011 / 2012 / 2013**

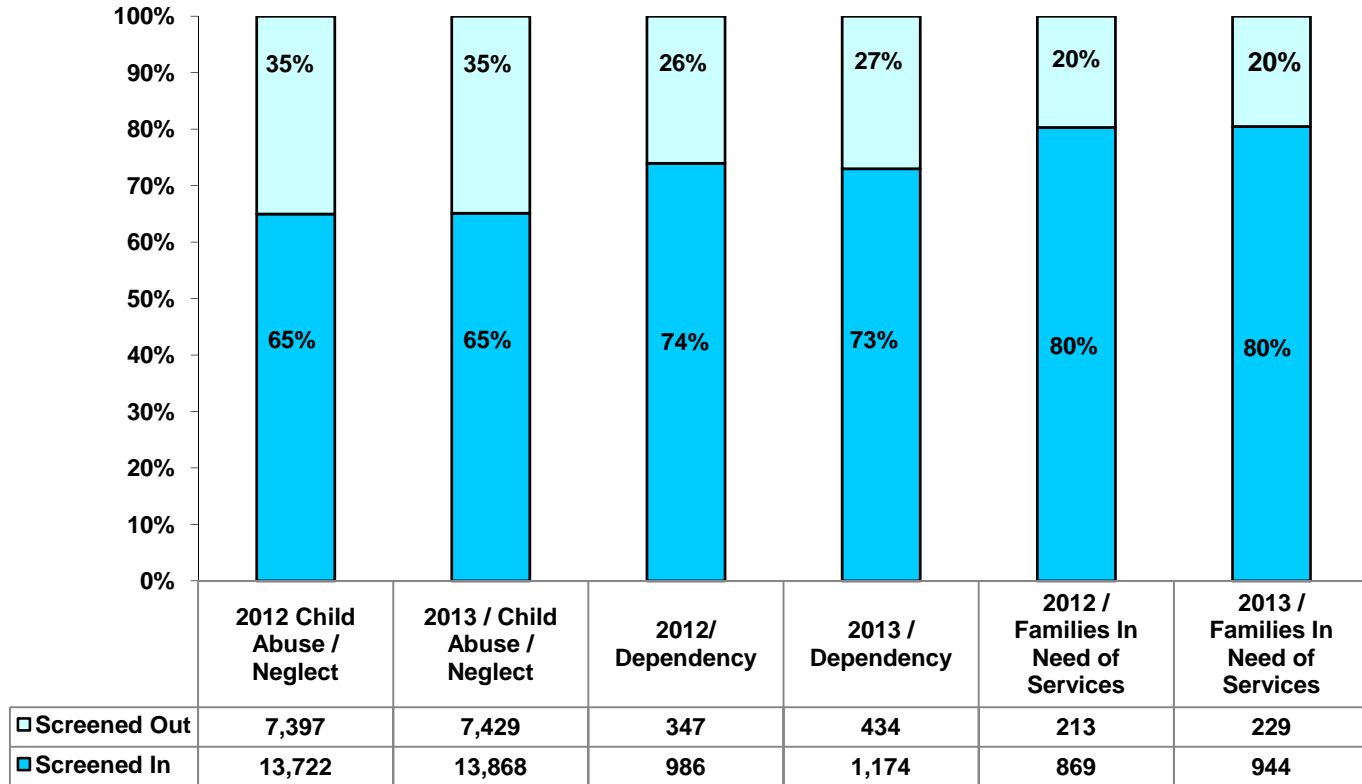


Year-to-Date 2011 = 38,038

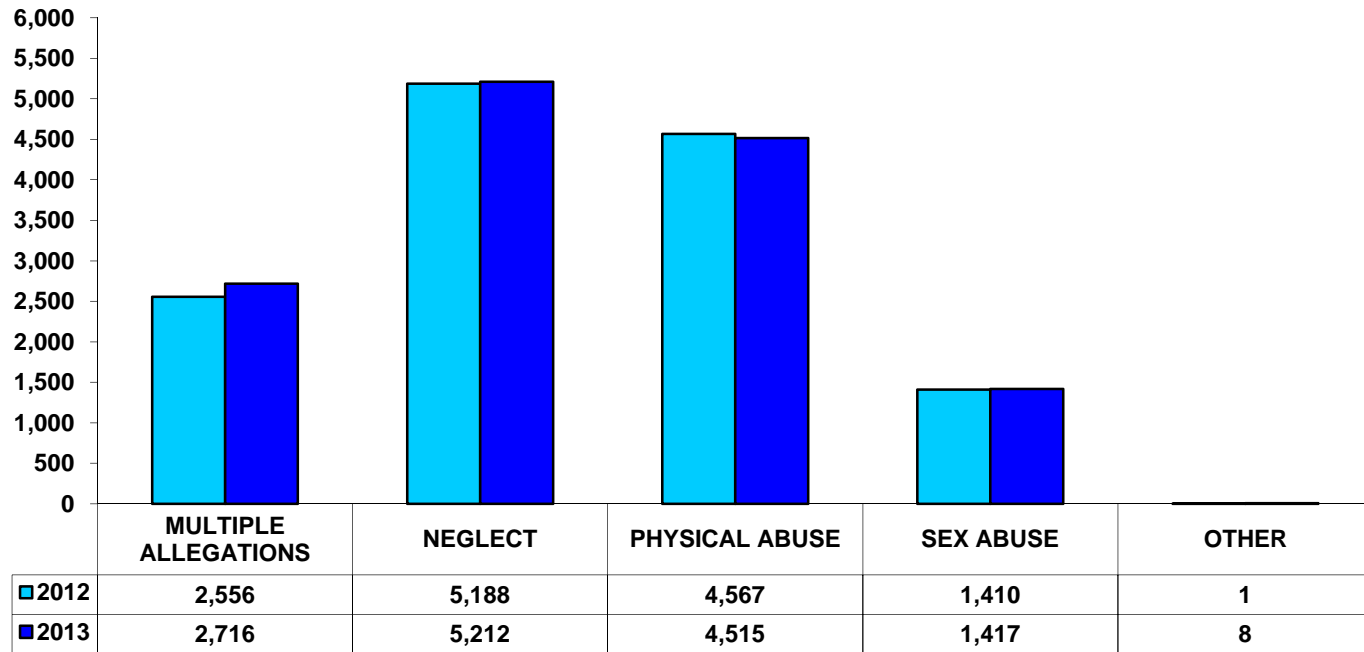
Year-to-Date 2012 = 37,041

Year-to-Date 2013 = 37,787

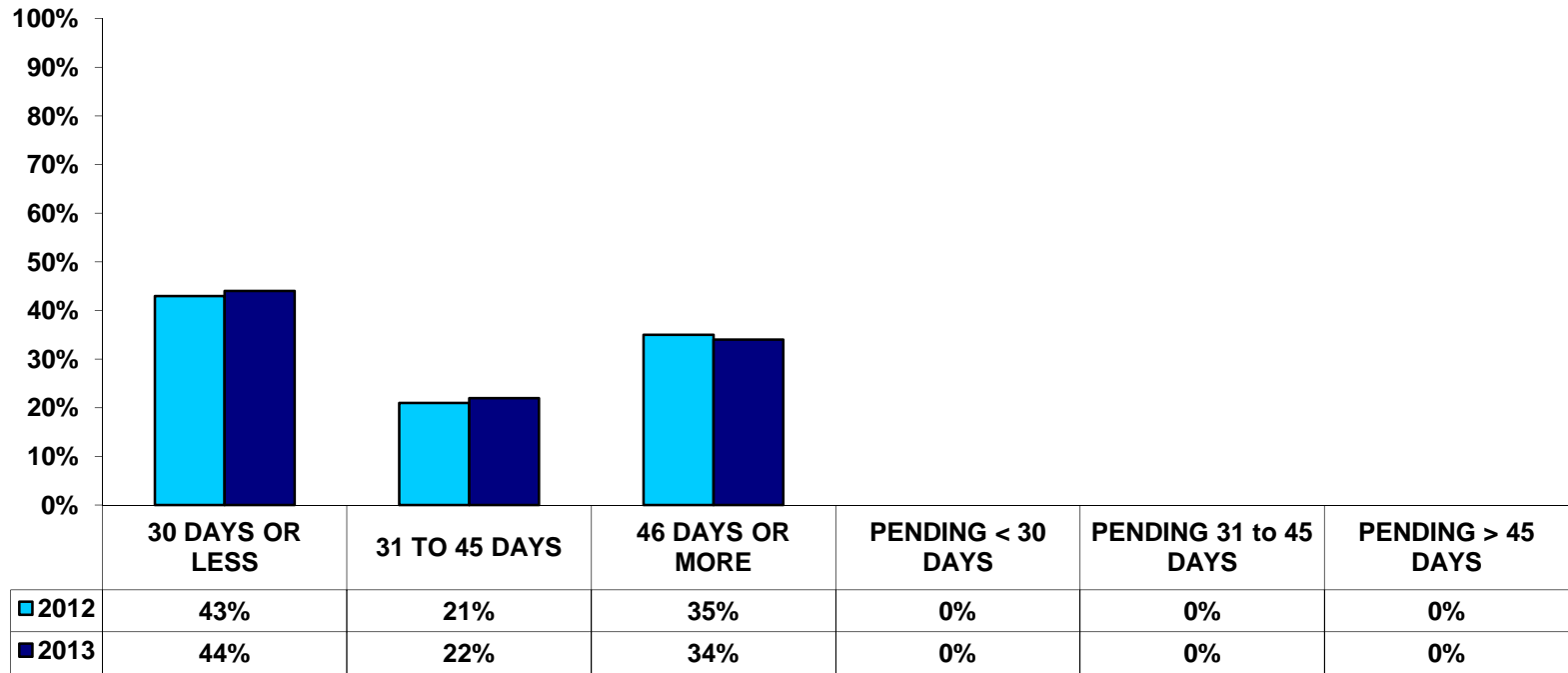
**SCREENED IN / SCREENED OUT REFERRALS BY CATEGORY  
JANUARY - DECEMBER  
2012 / 2013**



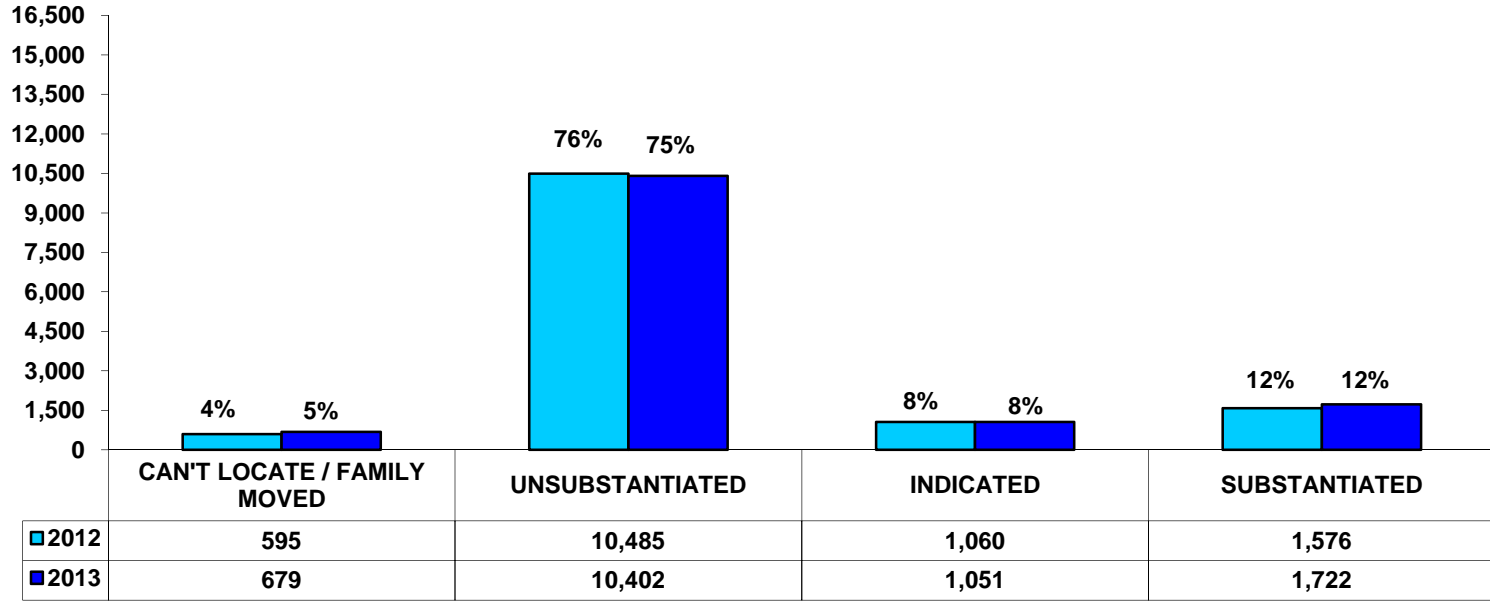
**SCREENED IN CHILD ABUSE / NEGLECT REFERRALS BY ALLEGATION TYPE  
JANUARY - DECEMBER  
2012 / 2013**



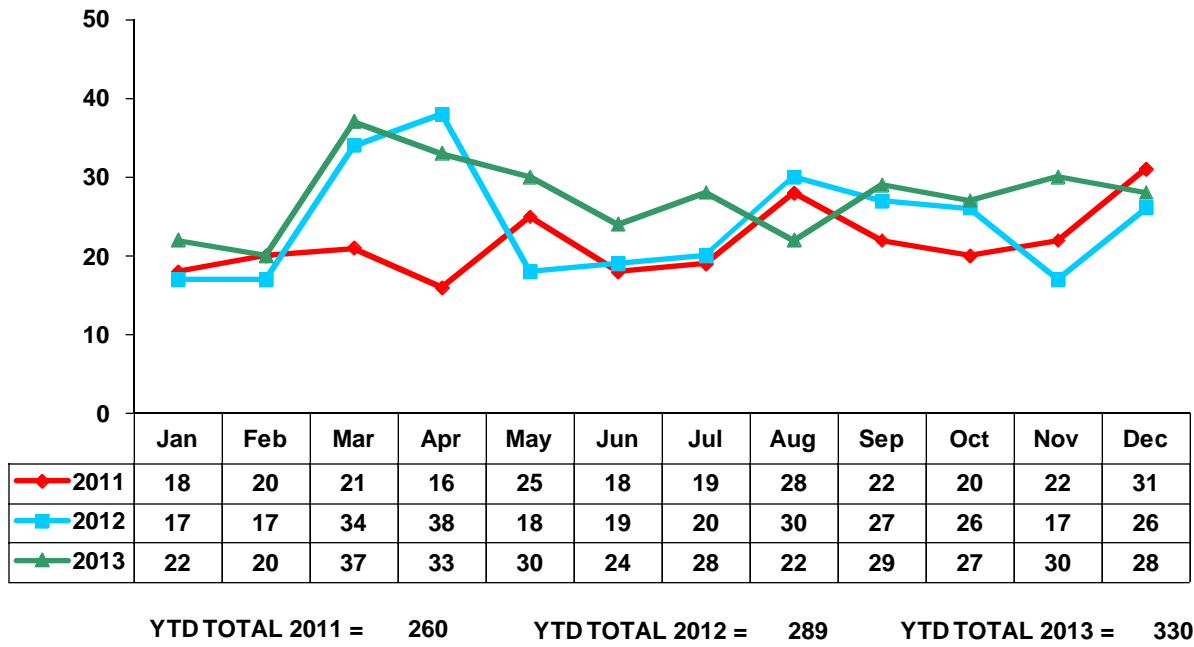
**TIME TO CASE DISPOSTION  
SCREENED-IN CHILD ABUSE / NEGLECT REFERRALS  
JANUARY - DECEMBER  
2012 / 2013**



**CASE DISPOSITIONS SCREENED IN & DISPOSED  
CHILD ABUSE / NEGLECT REFERRALS  
JANUARY - DECEMBER  
2012 / 2013**



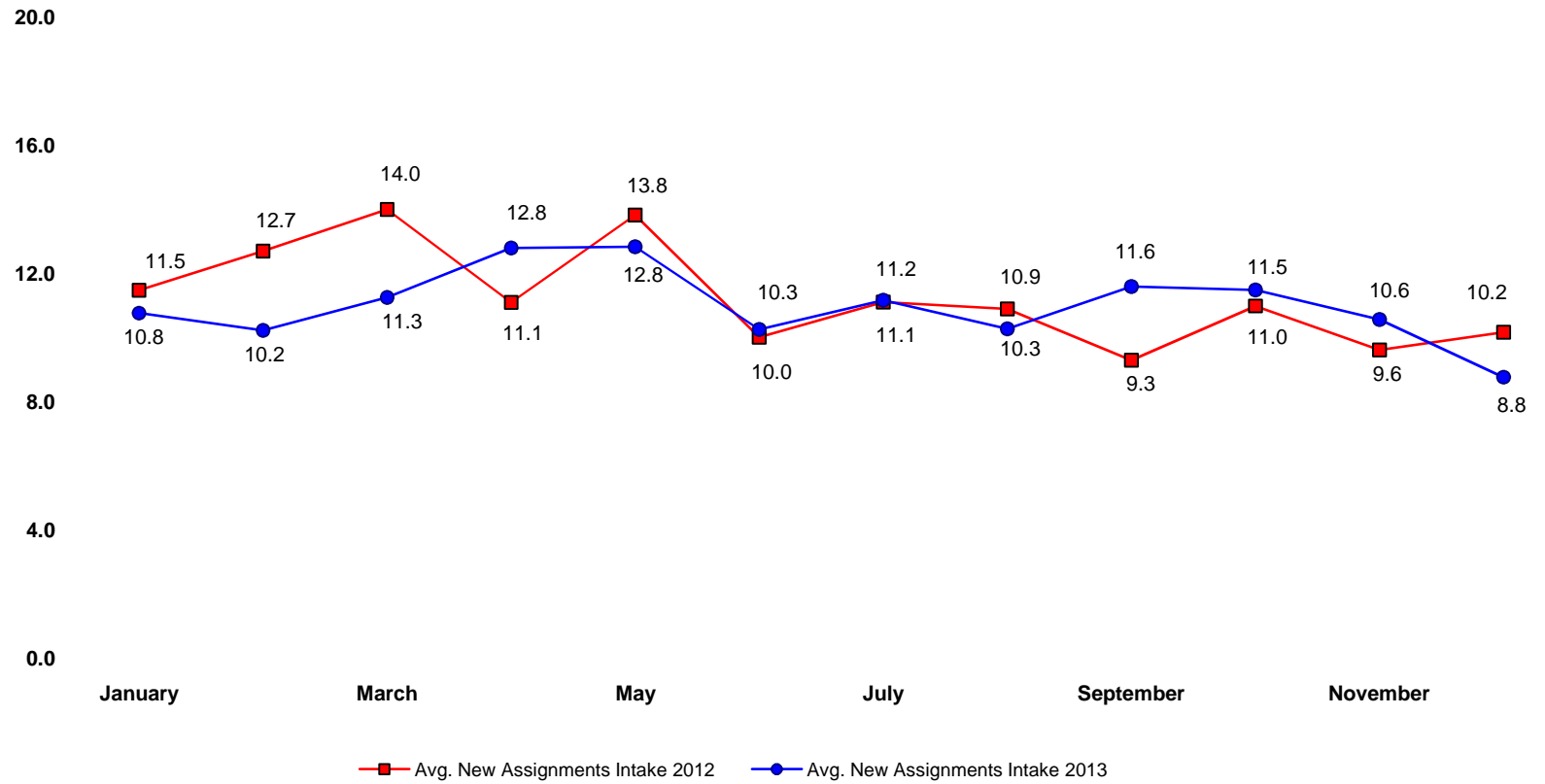
**POSITIVE TOX REFERRALS BY MONTH  
2011 THROUGH 2013**





**AVERAGE MONTHLY NEW CASE ASSIGNMENTS - INTAKE UNITS  
END OF MONTH FIGURES 2012 THROUGH 2013**

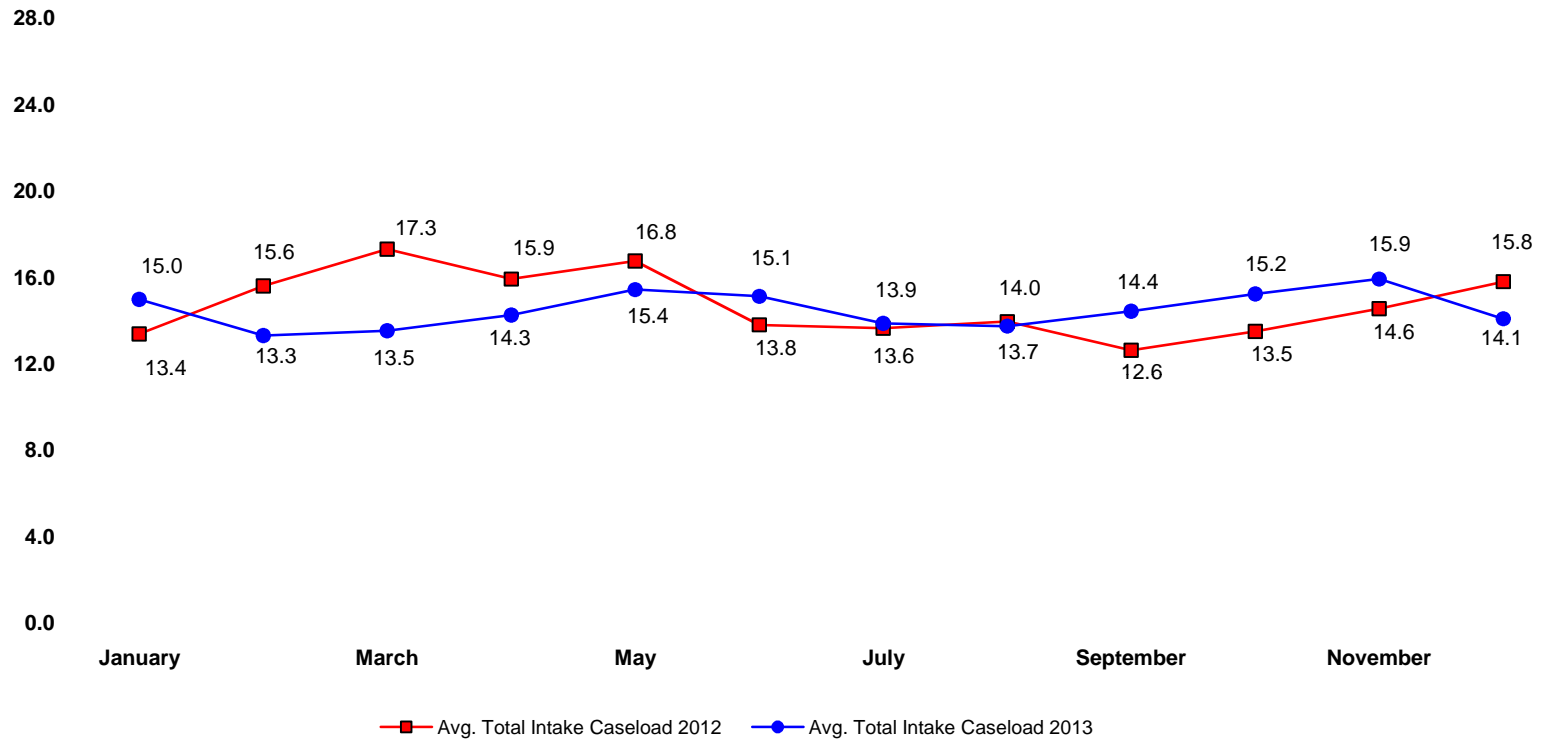
**Year-to-Date Average Per Worker**  
Avg. 2012 = 11.3    Avg. 2013 = 11.0



**AVERAGE TOTAL CASELOAD - INTAKE UNITS  
END OF MONTH FIGURES 2012 THROUGH 2013**

**Year-to-Date Average Per Worker**

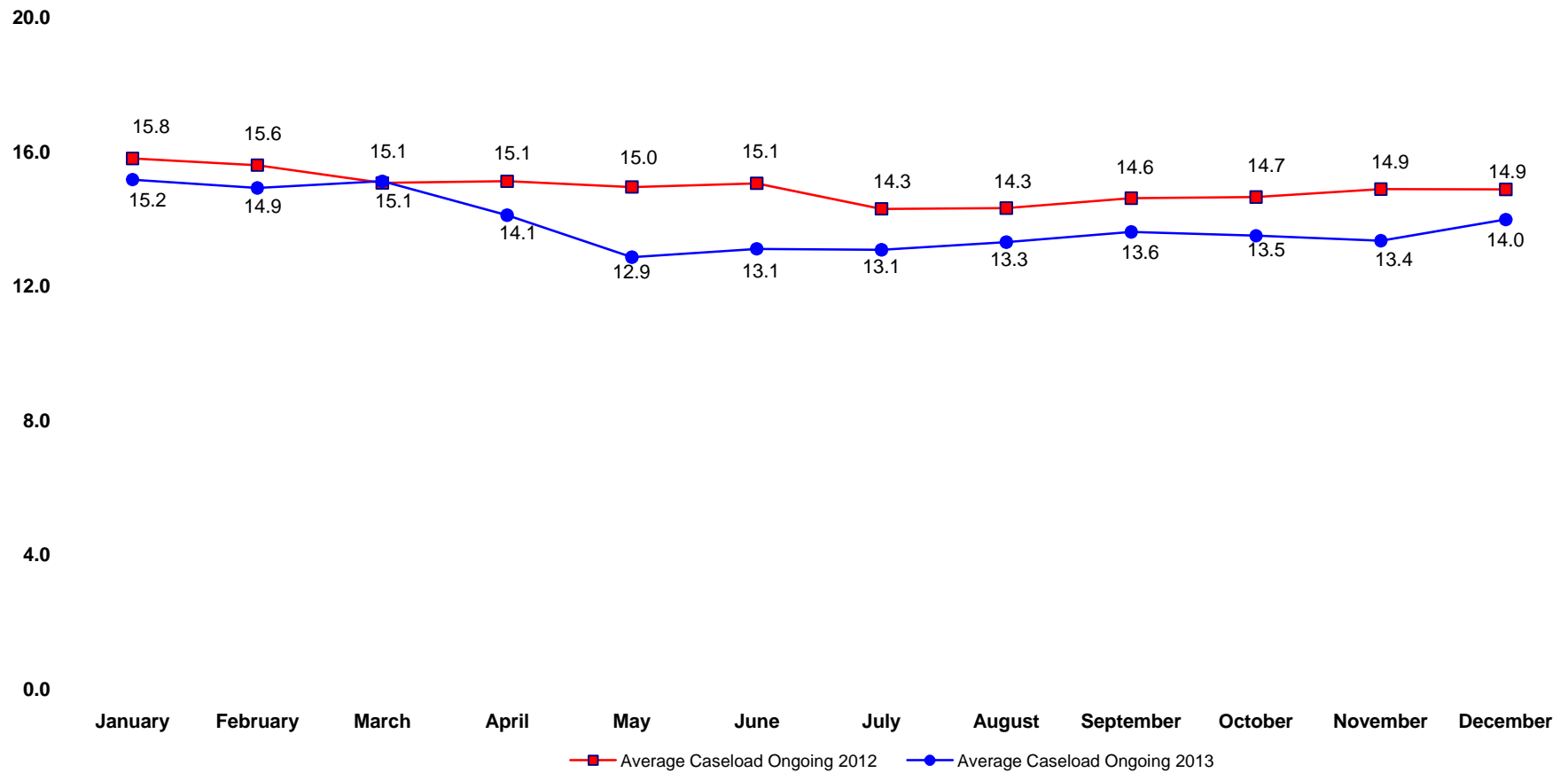
Avg. 2012 = 14.7 Avg. 2013 = 14.5



**AVERAGE TOTAL CASELOAD ONGOING UNITS  
END OF MONTH FIGURES 2012 THROUGH 2013**

**Year-to-Date Average Per Worker**

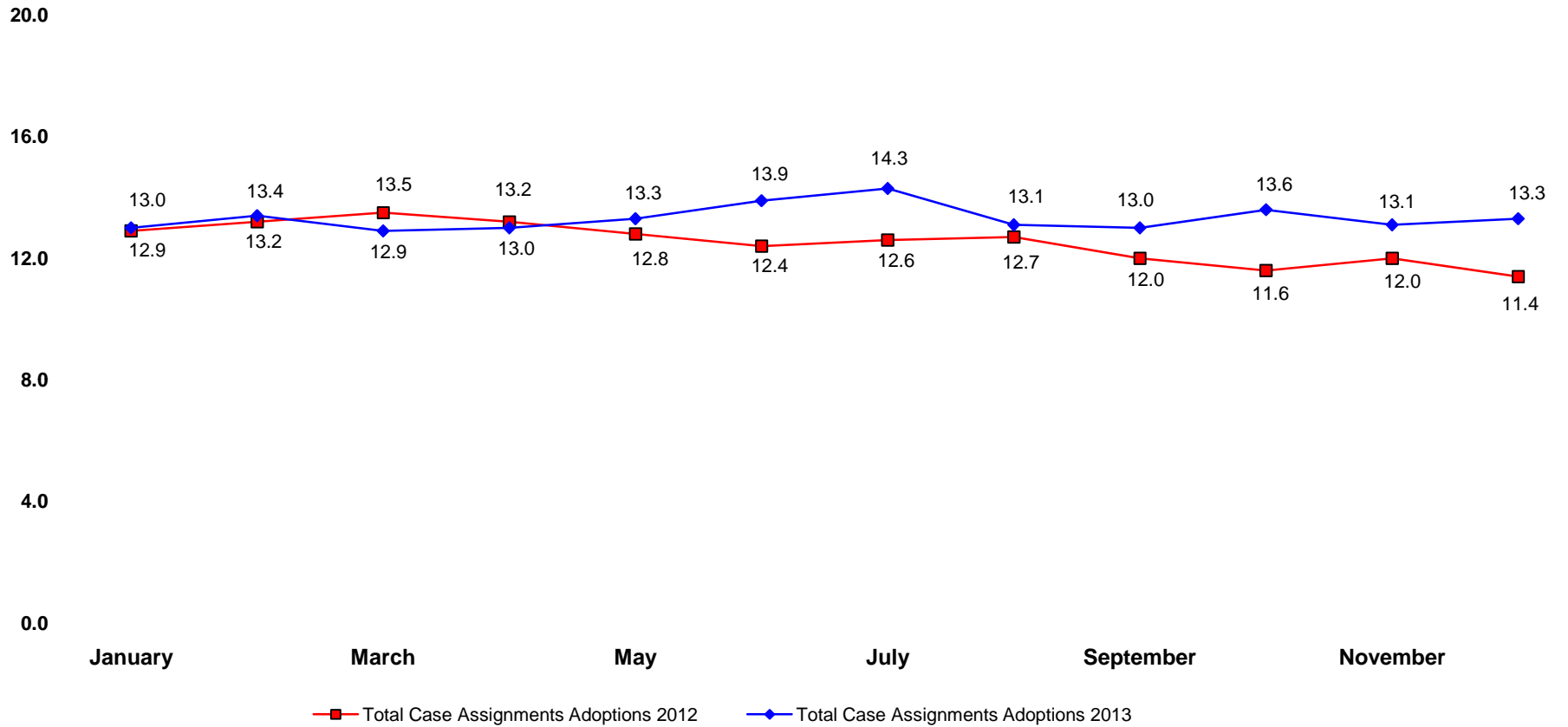
Avg. 2012 = 14.9 Avg. 2013 = 13.8



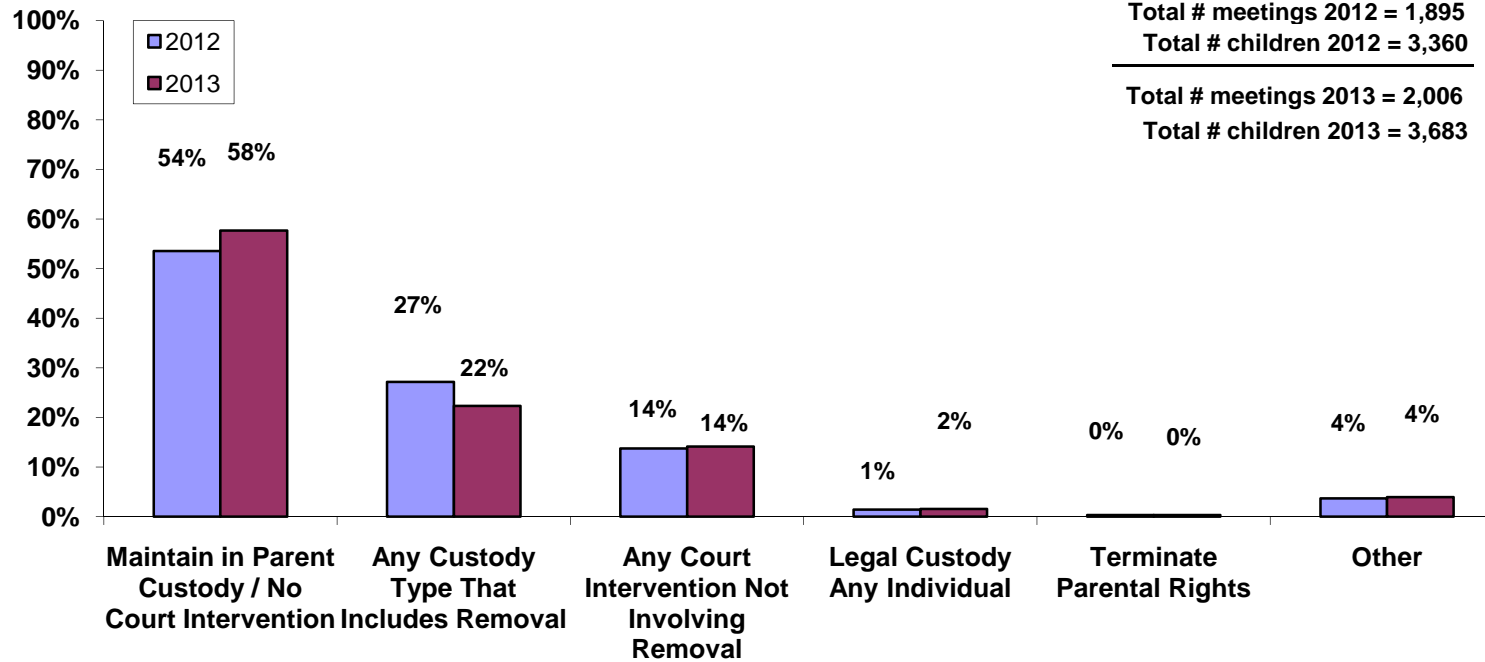
**AVERAGE TOTAL CASELOAD - ADOPTIONS UNIT  
END OF MONTH FIGURES 2012 THROUGH 2013**

**Year-to-Date Average Per Worker**

Avg. 2012 = 12.5    Avg. 2013 = 13.3



**INITIAL CUSTODY STAFFING RECOMMENDATIONS  
JANUARY - DECEMBER  
2012 / 2013**

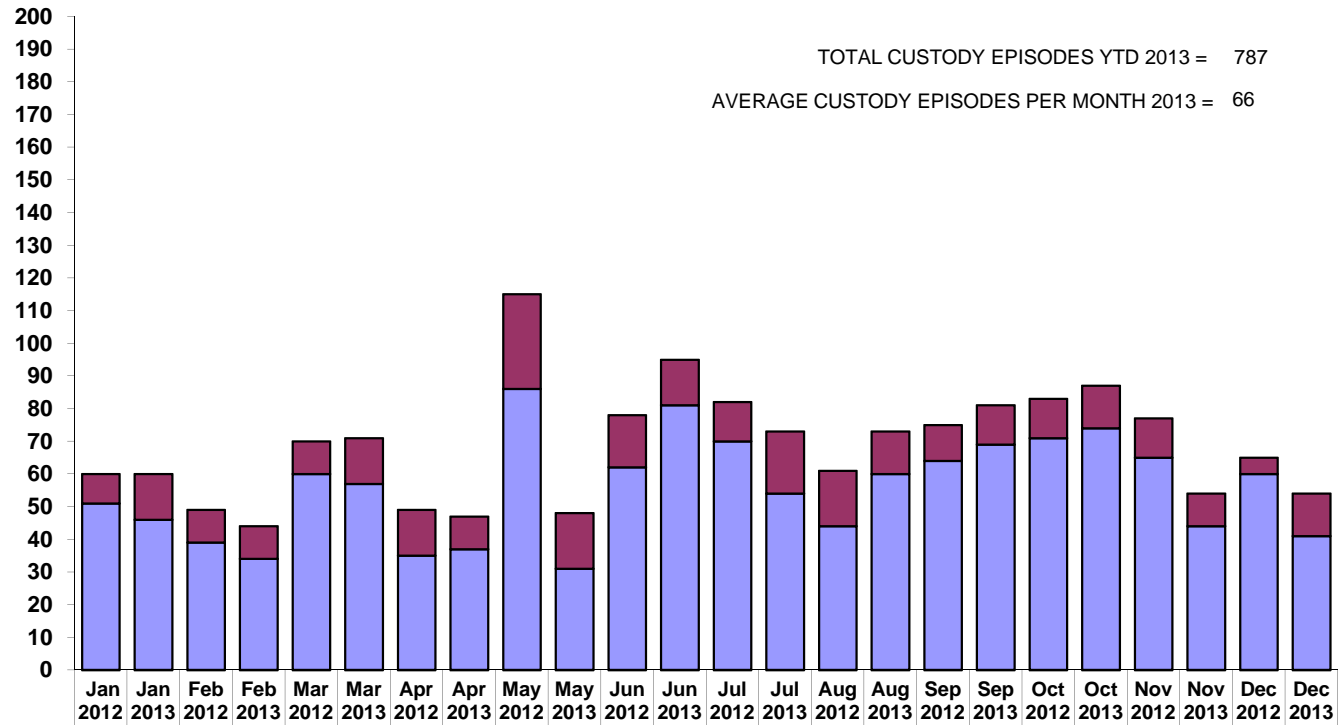


Total # meetings 2012 = 1,895  
 Total # children 2012 = 3,360  


---

 Total # meetings 2013 = 2,006  
 Total # children 2013 = 3,683

**CUSTODY EPISODES BY MONTH  
JANUARY - DECEMBER  
2012 / 2013**

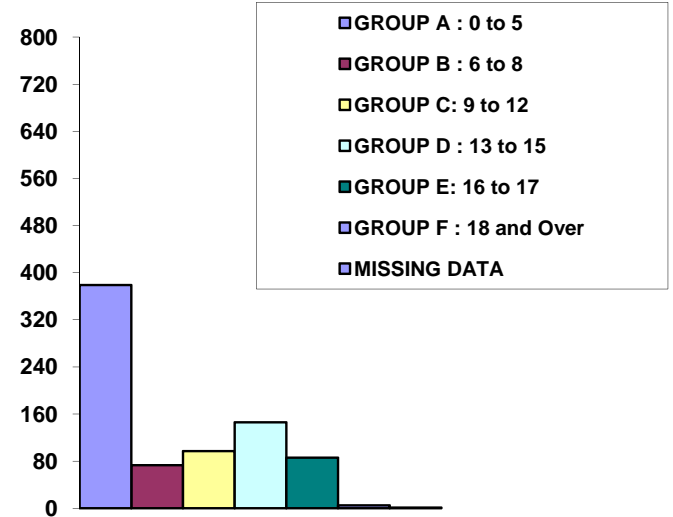
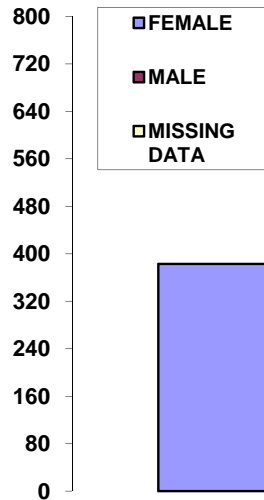
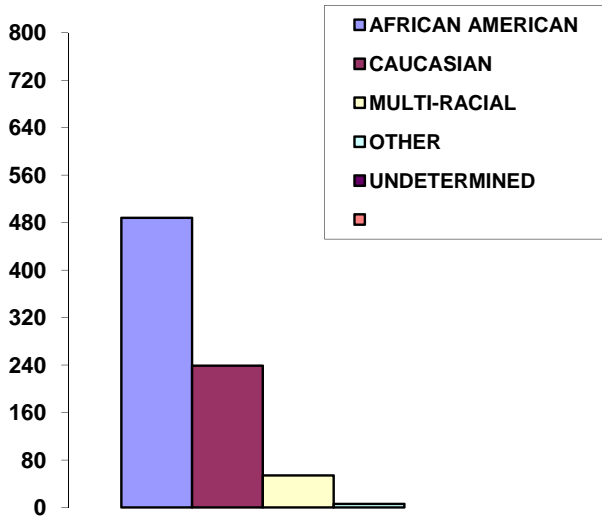


	Jan 2012	Jan 2013	Feb 2012	Feb 2013	Mar 2012	Mar 2013	Apr 2012	Apr 2013	May 2012	May 2013	Jun 2012	Jun 2013	Jul 2012	Jul 2013	Aug 2012	Aug 2013	Sep 2012	Sep 2013	Oct 2012	Oct 2013	Nov 2012	Nov 2013	Dec 2012	Dec 2013
■ Children Entering Custody Having a Previous Episode	9	14	10	10	10	14	14	10	29	17	16	14	12	19	17	13	11	12	12	13	12	10	5	13
■ Children Entering Custody : No Previous Episode	51	46	39	34	60	57	35	37	86	31	62	81	70	54	44	60	64	69	71	74	65	44	60	41

\* Children entering custody having a previous episode: count of children entering custody by month who have had at least 1 previous custody episode with Cuyahoga County DCFS.

\* Children entering custody no previous episode: count of children entering custody by month and child has no previous custody episode with Cuyahoga County DCFS

**INITIAL CUSTODY ENTRIES BY  
RACE / GENDER / AGE  
JANUARY - DECEMBER 2013**



Race	Count	% Of Total
African American	488	62%
Caucasian	239	30%
Multi-Racial	54	7%
Other	6	1%
Undetermined	0	0%
<b>Total</b>	<b>787</b>	<b>100%</b>

Gender	Count	% Of Total
Female	383	49%
Male	404	51%
Missing Data	0	0%
<b>Total</b>	<b>787</b>	<b>100%</b>

Age Group	Count	% Of Total
Group A : 0 to 5	379	48%
Group B : 6 to 8	73	9%
Group C : 9 to 12	97	12%
Group D : 13 to 15	146	19%
Group E : 16 to 17	86	11%
Group F : 18 or older	5	1%
Missing Data	1	0%
<b>Total</b>	<b>787</b>	<b>100%</b>

Race / 2012	% Of Total 2012
African American	63%
Caucasian	27%
Missing Data	5%
Multi-Racial	5%

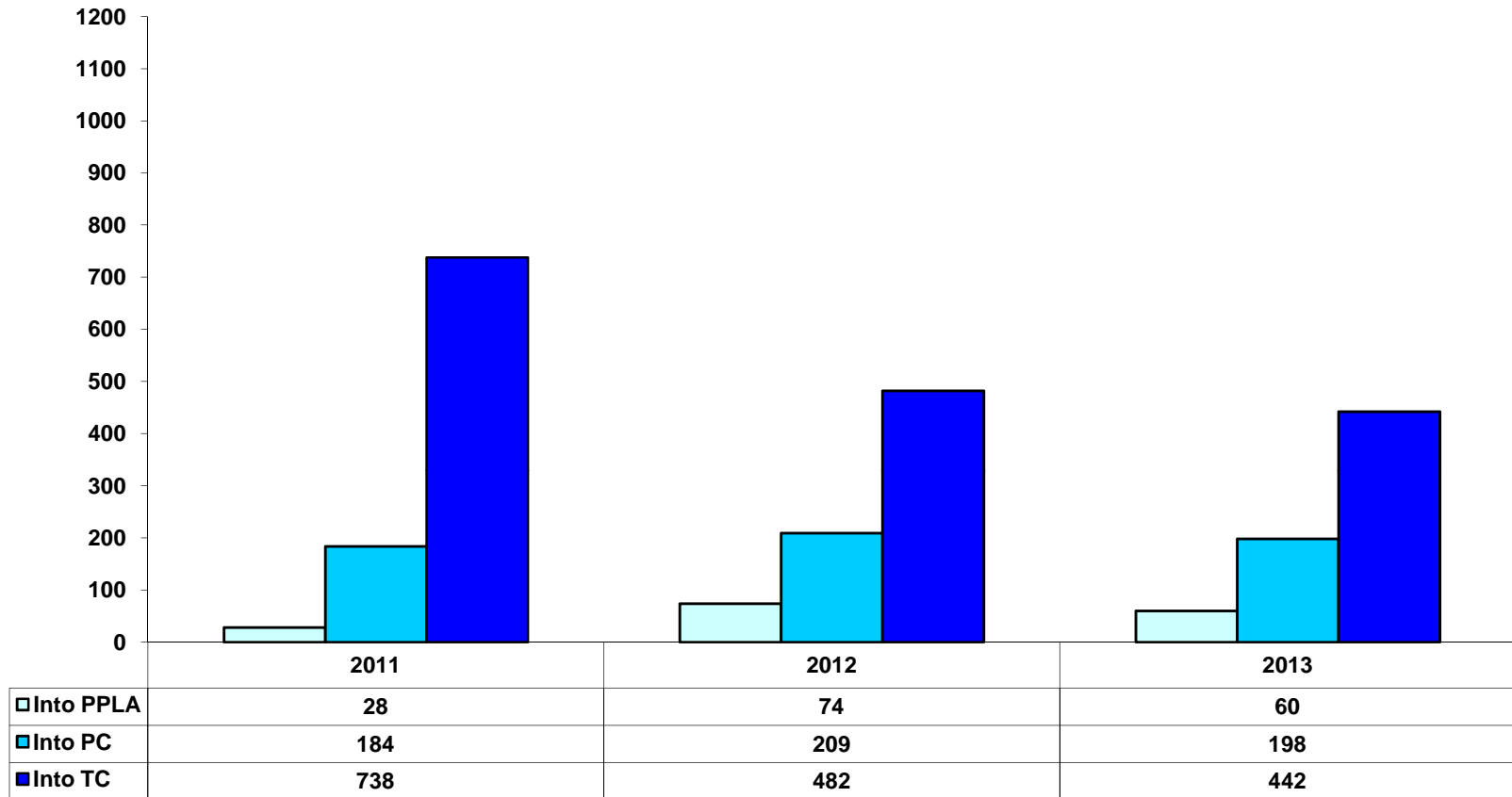
Gender / 2012	% Of Total 2012
Female	49%
Male	50%
Missing Data	1%

Age Group / 2012	% Of Total 2012
Group A : 0 to 5	47%
Group B : 6 to 8	10%
Group C : 9 to 12	12%
Group D : 13 to 15	16%
Group E : 16 to 17	15%
Group F : 18 or >	0%
Missing Data	0%

\* Race for persons under age 18 / Cuyahoga County  
53% Caucasian / 37% African American / 10% Other - more than 1 race

\* Source: U.S Bureau of the Census, 2010 Census, Summary File 1, PCT12A, PCT12B, PCT12C, PCT12D, PCT12E, PCT12F, PCT12G, and PCT12H.

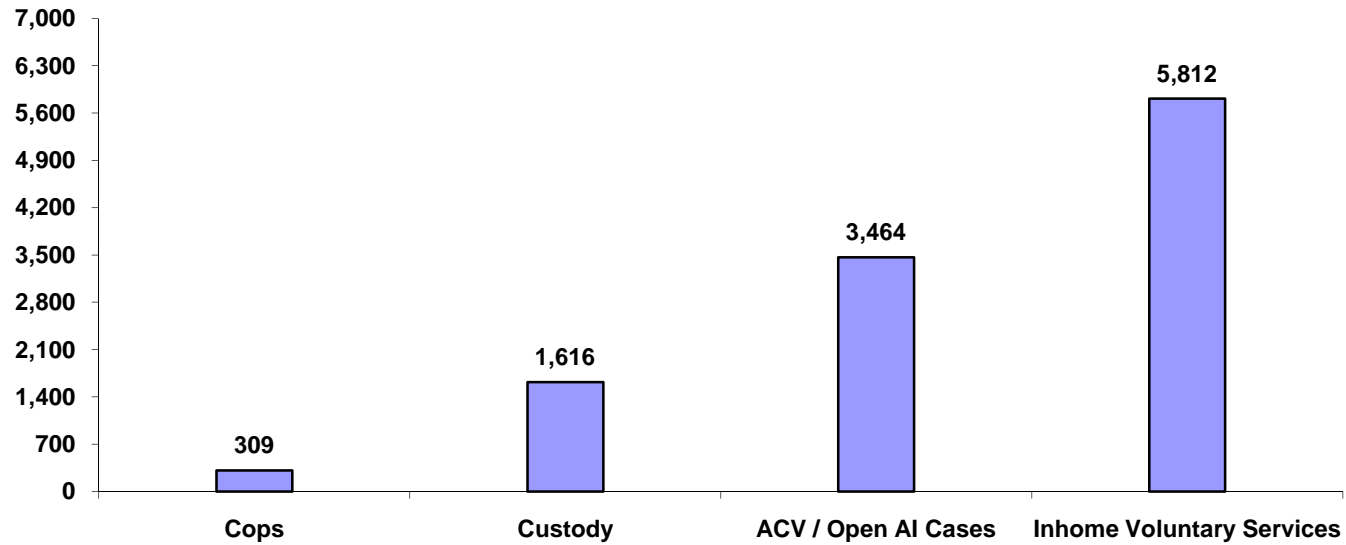
**CUSTODY TRANSITIONS  
 NUMBER OF CHILDREN COMING INTO PLANNED PERMANENT LIVING ARRANGEMENT (PPLA\*) Status,  
 PERMANENT CUSTODY STATUS (PC), OR TEMPORARY CUSTODY STATUS(TC)  
 CUMULATIVE MEASUREMENTS: YEAR-TO-DATE TOTALS THROUGH JANUARY - DECEMBER  
 2011, 2012 & 2013**



\*PPLA, formerly known as Long Term Foster Care



**CHILDREN RECEIVING SERVICES ON OPEN CASES  
AT END OF MONTH : DECEMBER 2013**



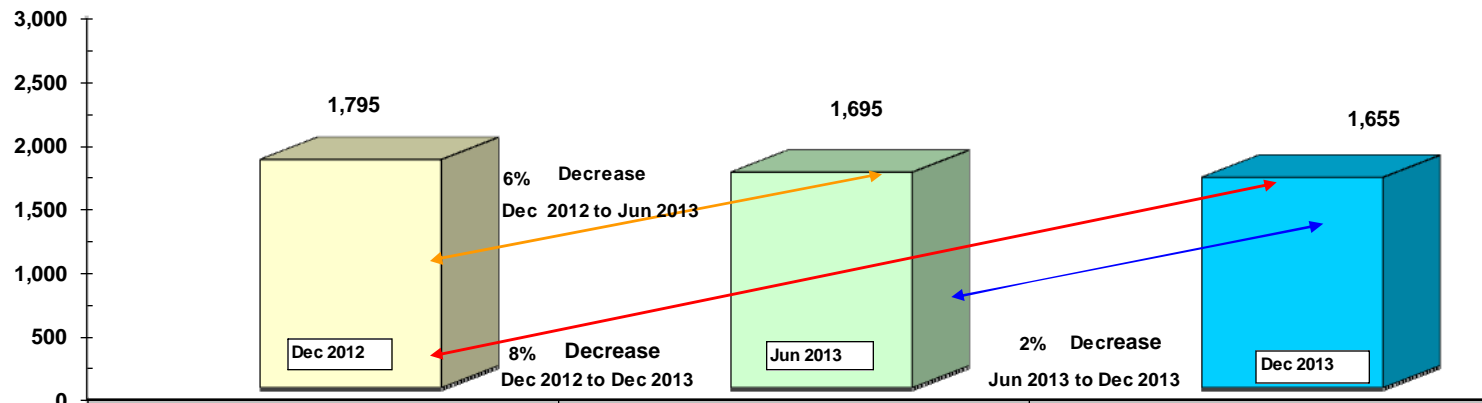
- \* COPS = children in court ordered protective supervision
- \* Custody = children in legal custody of DCFS
- \* ACV/Open AI Cases = distinct count of children who are alleged child victims on open assessment/investigation cases where child is not in COPS and not in agency custody.
- \* Inhome Voluntary Services = children who are active participants in open cases, are listed on case plan and who are not in court ordered protective supervision and are not in custody of DCFS.

**CHILDREN IN PLACEMENT - BY PLACEMENT TYPE  
CURRENT MONTH & PREVIOUS SIX MONTHS  
POINT-IN-TIME MEASURES ( END OF EACH MONTH)  
JUNE 2013 THROUGH DECEMBER 2013**

Month / Yr	Relative Home Count	% of Total	Agency Foster Home Count	% of Total	Network / Shared Foster Home Count	% of Total	Adoptive Home	% of Total	Certified Residential Center	% of Total	Group Home	% of Total	Independent Living	% of Total	Other	% of Total	Total # In Placement
Jun-13	242	14%	260	15%	846	50%	62	4%	163	10%	41	2%	49	3%	32	2%	1,695
Jul-13	240	14%	257	15%	851	50%	72	4%	157	9%	42	2%	51	3%	42	2%	1,712
Aug-13	231	14%	242	14%	851	50%	77	5%	155	9%	40	2%	50	3%	44	3%	1,690
Sep-13	238	14%	240	14%	847	50%	79	5%	146	9%	45	3%	47	3%	38	2%	1,680
Oct-13	258	15%	233	14%	853	50%	87	5%	137	8%	56	3%	41	2%	35	2%	1,700
Nov-13	276	16%	235	14%	824	49%	84	5%	135	8%	53	3%	44	3%	32	2%	1,683
Dec-13	259	16%	235	14%	847	51%	56	3%	132	8%	54	3%	38	2%	34	2%	1,655

**TOTAL NUMBER OF CHILDREN IN PLACEMENT**

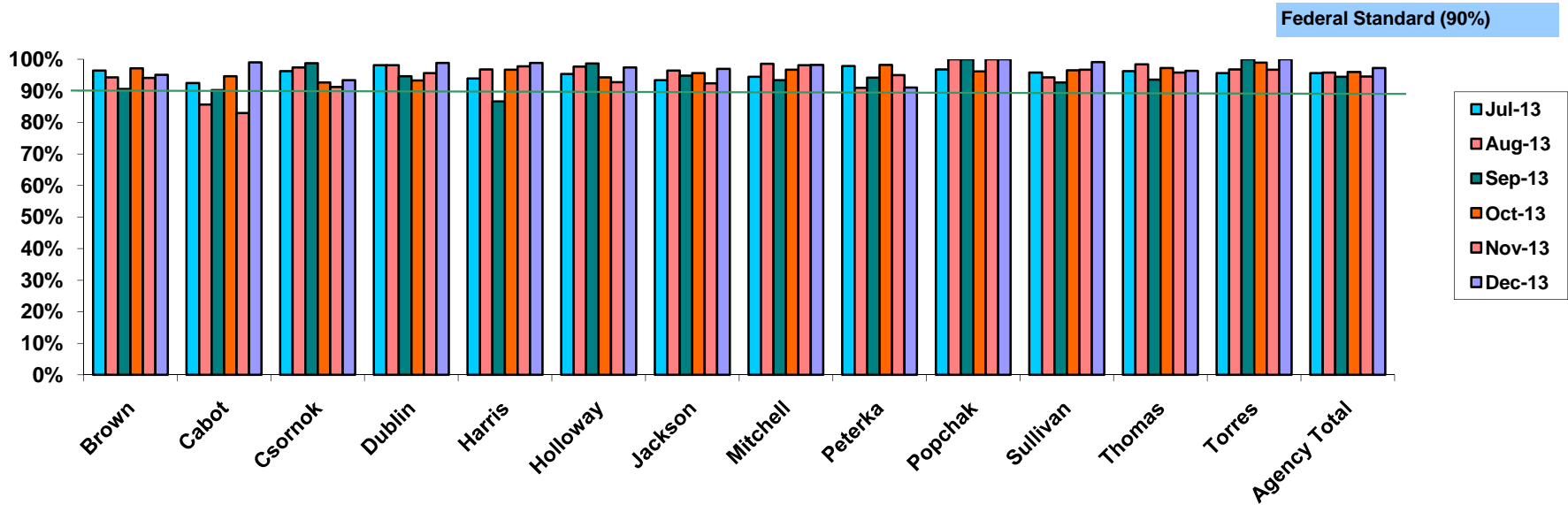
Point in Time Measures at End of Month for December 2012 / June 2013 / December 2013



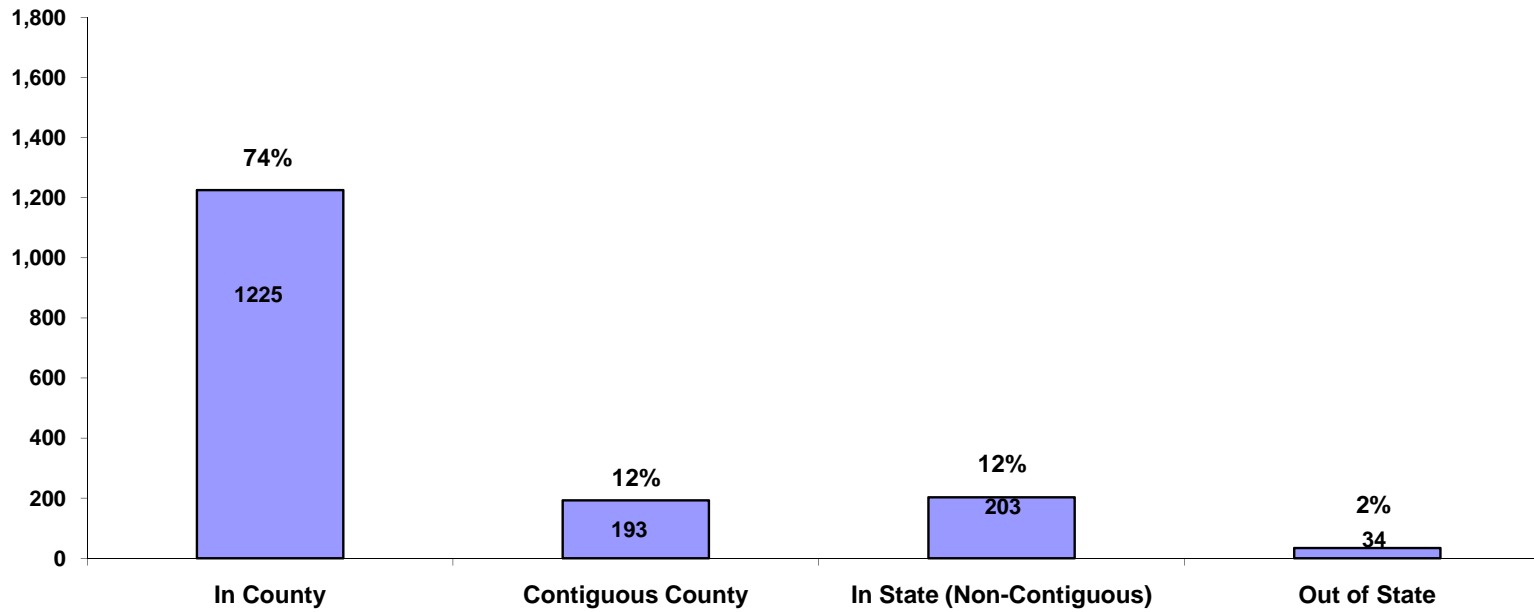
"Other" includes Detention Facilities, Hospital and all other placements . In February 2009 the data source for this report was switched from FACTS to SACWIS even while placement data is temporarily being stored across multiple systems. Because data is stored in multiple systems and for this report may not always be reconciled - these figures may change as SACWIS is updated. Additionally, reports prior to February 2009 would include children in placements monitored by DCFS that were court custody children - those placements are not linked to DCFS in SACWIS and are not counted. Count is of all children in open placements regardless of custody status.

**MONTHLY FACE-TO-FACE SOCIAL SERVICES WORKER / CHILD CONTACTS  
SUMMARY BY CHIEF & AGENCY TOTAL**

Month	Brown	Cabot	Csornok	Dublin	Harris	Holloway	Jackson	Mitchell	Peterka	Popchak	Sullivan	Thomas	Torres	Agency Total
Jul-13	96.5%	92.5%	96.3%	98.2%	93.9%	95.4%	93.4%	94.4%	97.9%	96.8%	95.8%	96.3%	95.7%	95.6%
Aug-13	94.3%	85.7%	97.4%	98.1%	96.8%	97.7%	96.4%	98.6%	91.0%	100.0%	94.3%	98.4%	96.8%	95.8%
Sep-13	90.6%	90.2%	98.8%	94.7%	86.7%	98.7%	94.9%	93.4%	94.2%	100.0%	92.7%	93.6%	100.0%	94.5%
Oct-13	97.2%	94.7%	92.7%	93.3%	96.7%	94.3%	95.7%	96.7%	98.3%	96.2%	96.5%	97.2%	99.0%	96.0%
Nov-13	94.1%	83.0%	91.3%	95.7%	97.8%	92.8%	92.4%	98.1%	95.0%	100.0%	96.8%	95.8%	96.7%	94.6%
Dec-13	95.1%	99.0%	93.4%	98.9%	98.9%	97.5%	96.9%	98.2%	91.1%	100.0%	99.2%	96.3%	100.0%	97.3%
Avg/Year	94.6%	90.8%	95.0%	96.5%	95.1%	96.0%	94.9%	96.6%	94.6%	98.8%	95.9%	96.3%	98.0%	95.6%



**IN COUNTY , CONTIGUOUS COUNTY, IN STATE, OUT OF STATE PLACEMENTS  
POINT-IN-TIME COUNTS AT END OF DECEMBER 2013**

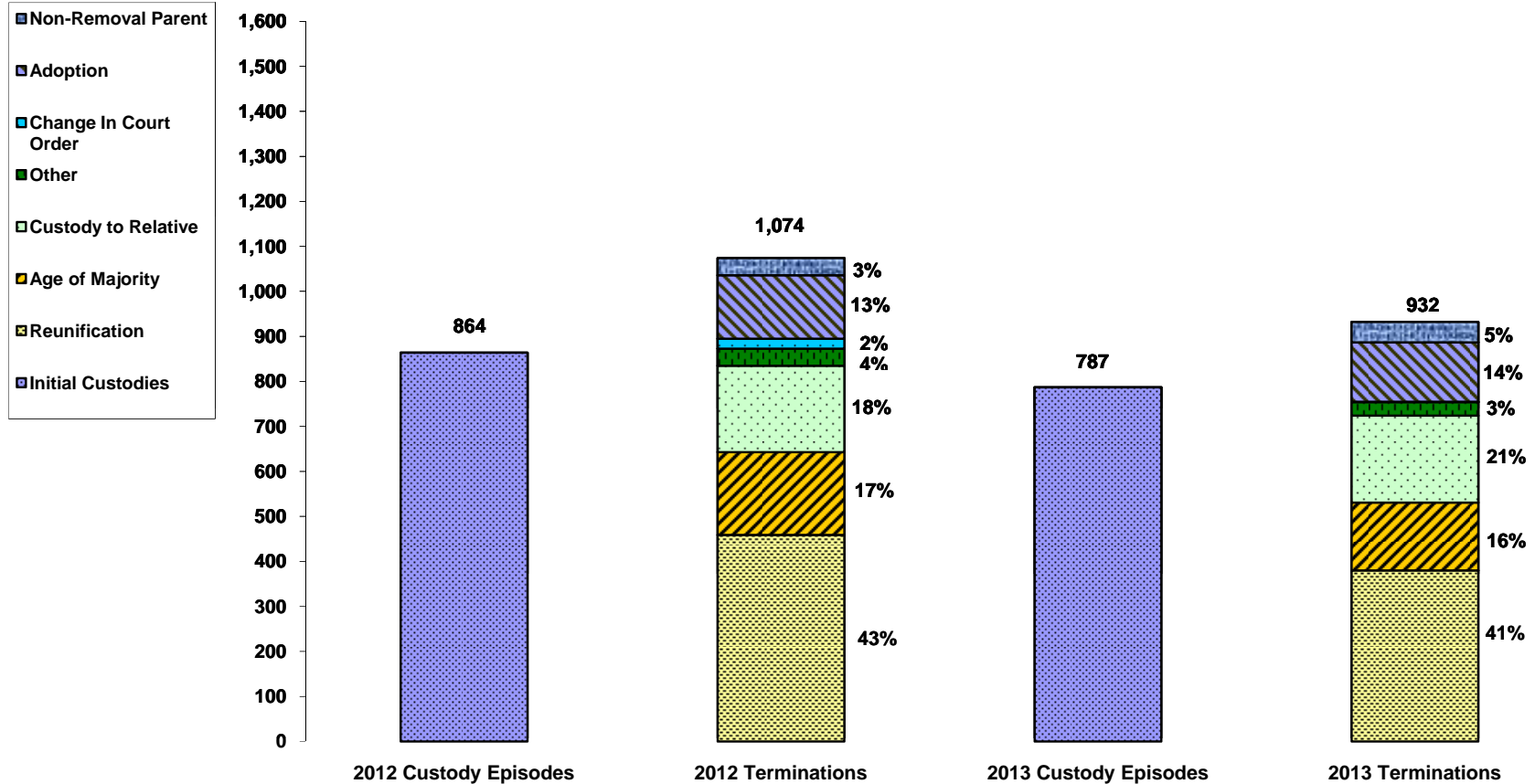


**OUT OF COUNTY PLMTS AS OF 11/30/2013**

	ADOPTIVE	APPROVED NON-RELATIVE	APPROVED RELATIVE	RESIDENTIAL CENTER	EMERGENCY SHELTER	FOSTER HOME	GROUP HOME	DETENTION FACILITY	INDEPENDENT LIVING	LICENSED MEDICAL FACILITY	TOTAL
OUT OF COUNTY / IN OHIO	8	2	32	23	0	330	0	1	0	0	396
OUT OF STATE	12	0	6	3	0	10	0	2	1	0	34

\* Contiguous counties include: Geauga, Lake, Lorain, Medina, Portage, Summit

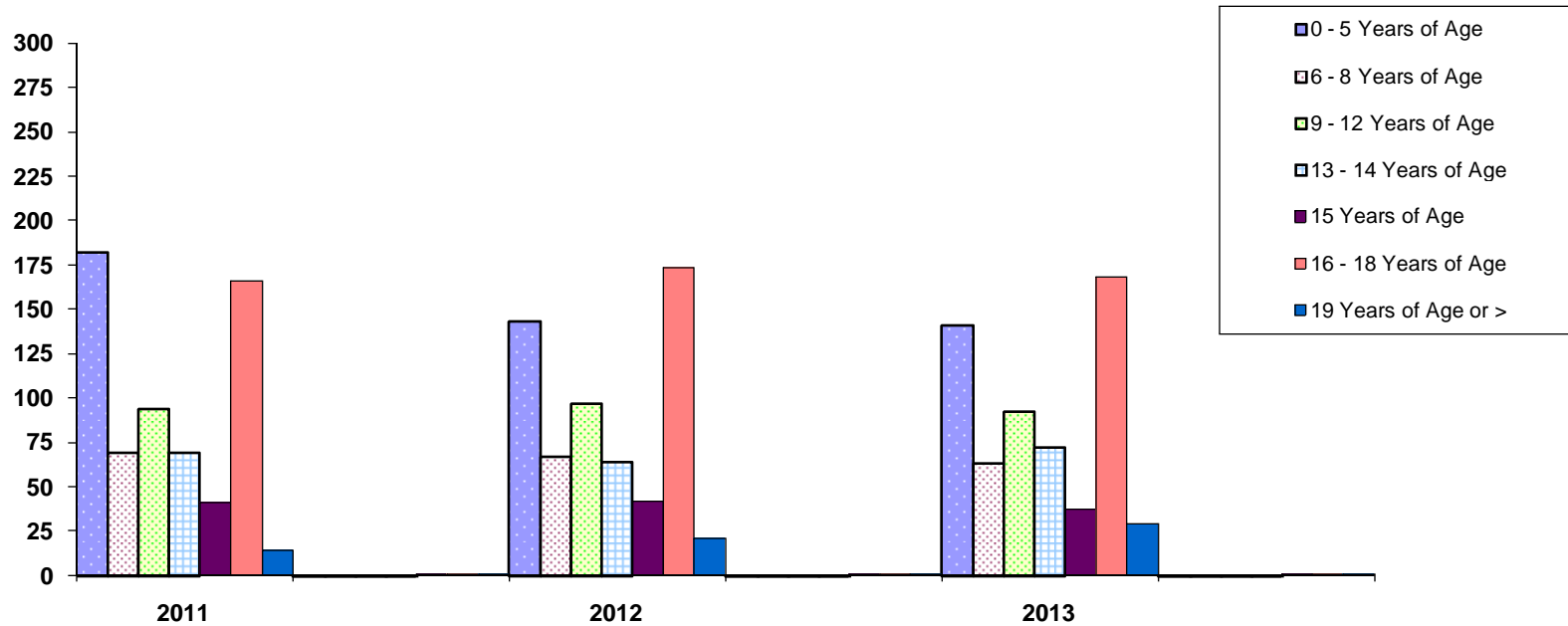
**CUSTODY TERMINATIONS BY TYPE  
 COMPARED WITH YEAR-TO-DATE TOTAL NUMBER OF INITIAL CUSTODIES  
 JANUARY - DECEMBER  
 2012 / 2013**



	Reunification	Age of Majority	Custody to Relative	* Other	Change in Court Order	Adoption	Custody To Non-Removal Parent
2012	459	184	192	38	22	141	38
2013	380	151	193	30	1	132	45

\* Other includes, voluntary agreement expired, AWOL > 30 days, custody to ODYS, custody to non-relative and child fatality.

**CHILDREN IN PERMANENT CUSTODY BY AGE**  
**POINT-IN-TIME MEASURE AT END OF DECEMBER**  
**2011, 2012 & 2013**



	2011		2012		2013	
	Count	% of PC Children	Count	% of PC Children	Count	% of PC Children
<b>0 - 5 Years of Age</b>	182	29%	143	24%	141	23%
<b>6 - 8 Years of Age</b>	69	11%	67	11%	63	10%
<b>9 - 12 Years of Age</b>	94	15%	97	16%	92	15%
<b>13 - 14 Years of Age</b>	69	11%	64	11%	72	12%
<b>15 Years of Age</b>	41	6%	42	7%	37	6%
<b>16 - 18 Years of Age</b>	166	26%	173	29%	168	28%
<b>19 Years of Age or &gt;</b>	14	2%	21	4%	29	6%
<b>Total</b>	<b>635</b>	<b>100%</b>	<b>607</b>	<b>100%</b>	<b>602</b>	<b>100%</b>

\* Count includes children who were in open permanent custody or permanent surrender custody status and who were in placement on last day of month

**TOTAL # of CHILDREN EXITING CUSTODY BY AGE OF MAJORITY  
BY FINAL CUSTODY TYPE / AGE AT EPISODE BEGINNING / LENGTH OF STAY  
JANUARY - DECEMBER 2013**

Month	Permanent Commitment	PPLA	Other	Total # Children Exiting by Emancipation For Month
January	3	1	4	8
February	1	2	4	7
March	7	2	1	10
April	3	2	5	10
May	3	3	4	10
June	5	7	4	16
July	7	2	3	12
August	18	11	3	32
September	8	4	6	18
October	4	3	5	12
November	1	8	1	10
December	2	2	2	6
<b>YTD Total</b>	<b>62</b>	<b>47</b>	<b>42</b>	<b>151</b>

\* Number of children exiting by age of majority in 2012 = 183

**Age of Children Who Exited by Emancipation  
At the Time Custody Episode Began**

Age at Custody Start	Count	%
Under Age 12	45	30%
Age 13 to 14	20	13%
Age 15 to 16	57	38%
Age 17 or >	29	19%
<b>Total</b>	<b>151</b>	

**Number of Custody Months For Children  
Exiting By Age of Majority**

Months in Custody	Count	%
0-12	13	9%
13-24	28	19%
25-36	29	19%
37 or >	81	53%
<b>Total</b>	<b>151</b>	

NOTE: count for past months are updated with each new report as SACWIS historical data may change causing data to differ from those in previous versions of this report.