



Cuyahoga County Division of Children and Family Services  
Patricia L. Rideout, Administrator

# Year End Statistical Report

## January - December 2014

**Division of Children & Family Services, 3955 Euclid Ave., Cleveland, OH 44115 (216) 431-4500**

TDD: Ohio Relay Service # is 1-800-750-0750 {NOTE: For questions about this report, you may call (216) 881-4125}

## DCFS MONTHLY STATISTICAL REPORT

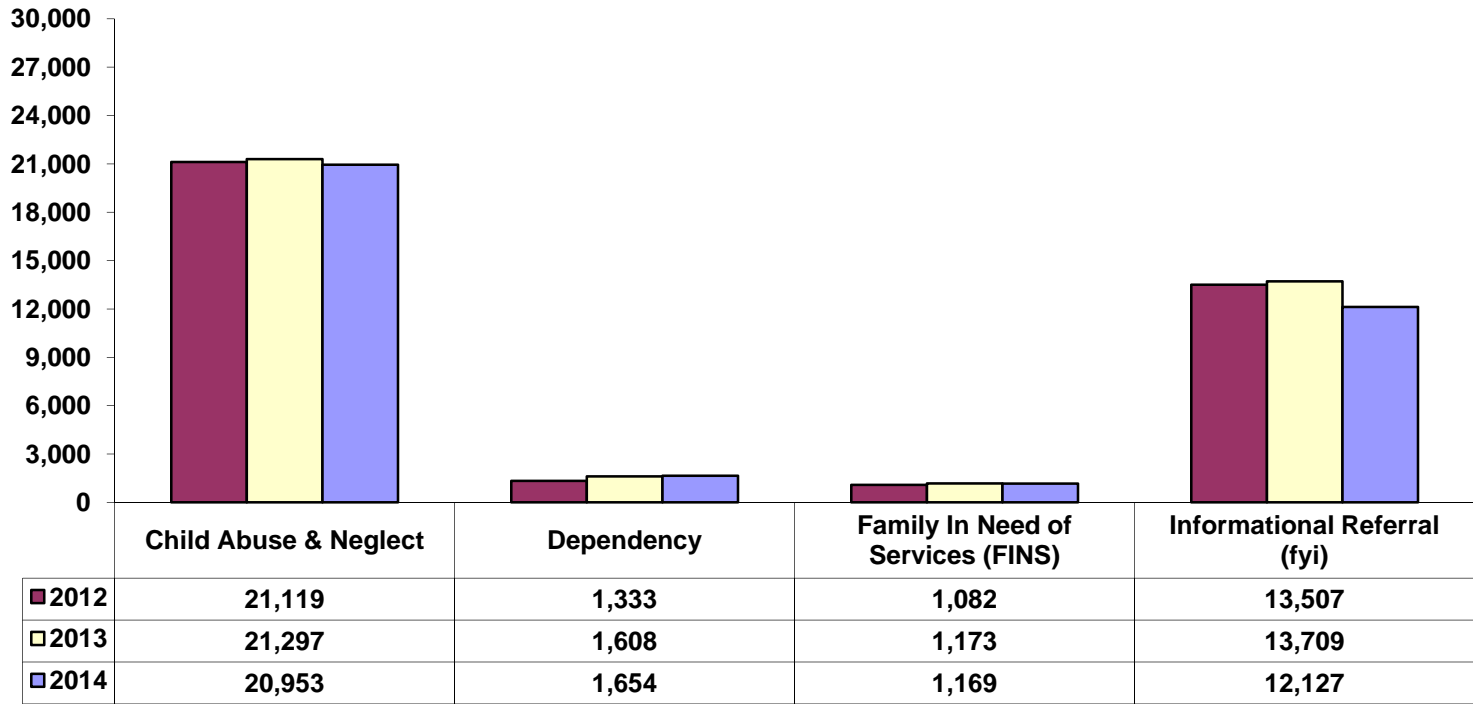
### TABLE OF CONTENTS

REFERRALS BY CATEGORY-----	1
SCREENED IN / SCREENED OUT REFERRALS BY INTAKE CATEGORY-----	2
SCREENED IN CHILD ABUSE & NEGLECT REFERRALS BY ALLEGATION TYPE-----	3
TIME TO DISPOSITION / SCREENED IN AND DISPOSED CHILD ABUSE & NEGLECT REFERRALS-----	4
CASE DISPOSITIONS / SCREENED IN AND DISPOSED CHILD ABUSE & NEGLECT REFERRALS-----	5
POSITIVE TOX REFERRALS-----	6
AVERAGE MONTHLY NEW CASE ASSIGNMENTS INTAKE-----	7
AVERAGE MONTHLY TOTAL CASELOAD INTAKE-----	8
AVERAGE MONTHLY TOTAL CASELOAD ONGOING-----	9
AVERAGE MONTHLY TOTAL CASELOAD ADOPTIONS-----	10
INITIAL CUSTODY STAFFING RECOMMENDATIONS-----	11
TIMELY COMPLETION OF TREATMENT OUTCOME REFERRALS-----	12
CHILDREN ENTERING CUSTODY / CHILDREN WITH PREVIOUS CUSTODY EPISODES-----	13
CUSTODY ENTRIES BY RACE / GENDER / AGE-----	14
CUSTODY TRANSITIONS-----	15
SARS HELD BY PRIMARY / ALTERNATE CASE FACILITATOR-----	16
CHILDREN RECEIVING SERVICES ON OPEN CASES-----	17
CHILDREN IN PLACEMENT BY PLACEMENT TYPE-----	18
FACE - TO - FACE SOCIAL WORKER - CHILD CONTACTS -----	19
IN COUNTY / CONTIGUOUS COUNTY / OUT OF COUNTY / OUT OF STATE PLACEMENTS -----	20
CUSTODY TERMINATIONS BY TYPE COMPARED WITH INITIAL CUSTODIES-----	21
CHILDREN IN PERMANENT CUSTODY BY AGE-----	22
CHILDREN EXITING CARE BY AGE OF MAJORITY: FINAL CUSTODY TYPE / AGE AT ENTRY / LENGTH OF EPISODE-----	23

#### **ABOUT THIS REPORT:**

Except where noted the source for all data used in this report is the Ohio Statewide Automated Child Welfare Information System (SACWIS) as of the last day of the reporting period. CCDCFS converted to this system on December 9th of 2008. Prior to that date the source was the Cuyahoga County FACTS system. Within SACWIS data are categorized and collected differently making comparisons of SACWIS data to historic FACTS data impractical. In SACWIS both current and historical data may be subject to change as it is continually being corrected and updated. This may cause statistics found in previous reports to be inconsistent with statistics found in more recent reports, even when the data pertains to the same time period.

**REFFERALS BY CATEGORY  
JANUARY - DECEMBER  
2012 / 2013 / 2014**

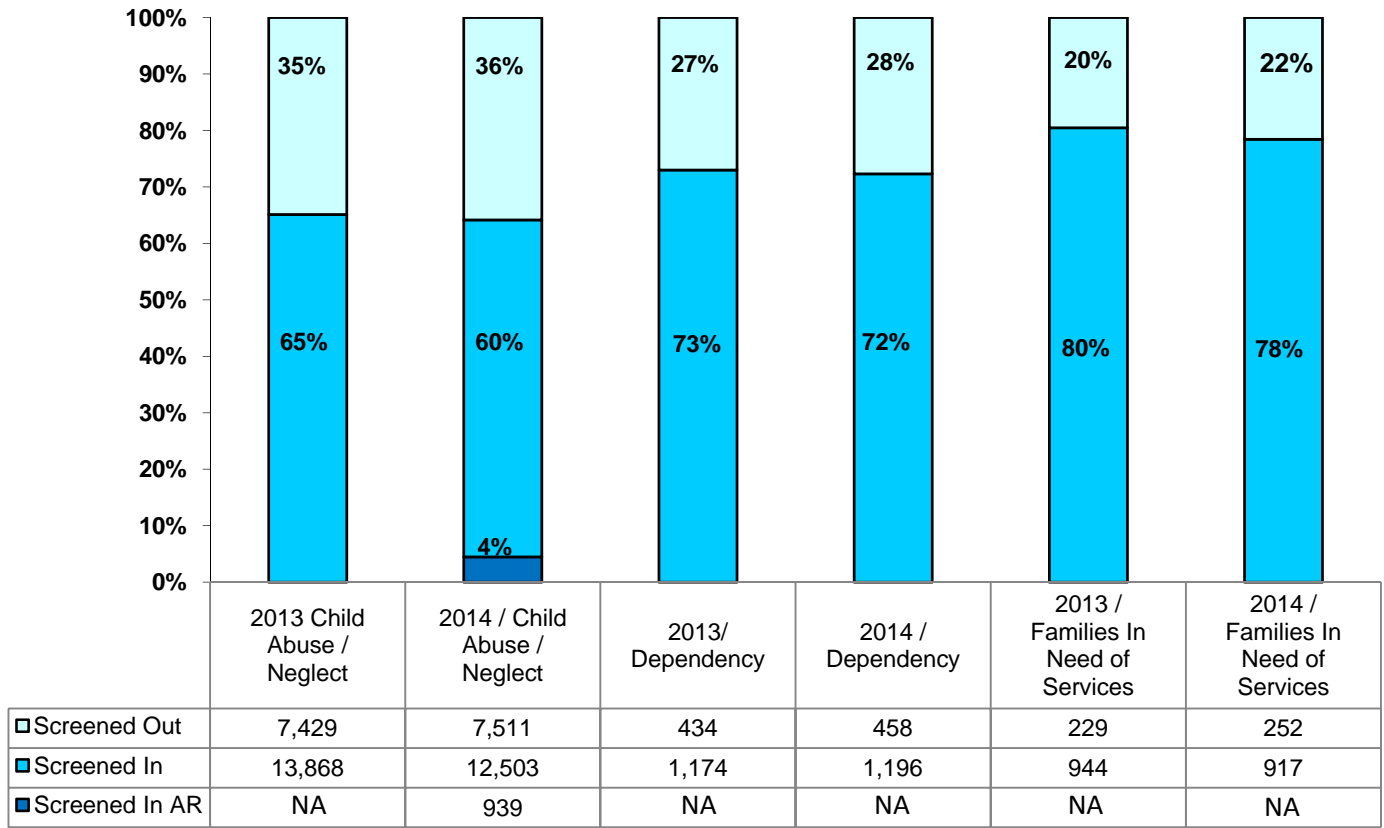


Year-to-Date 2012 = 37,041

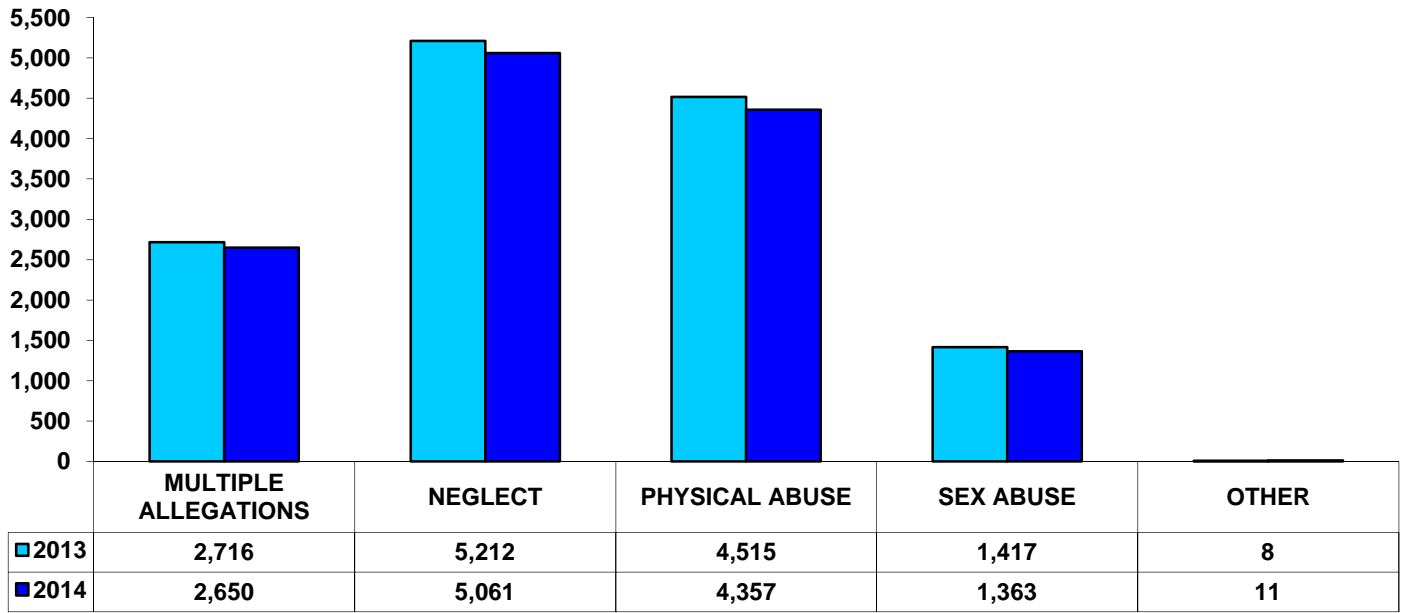
Year-to-Date 2013 = 37,787

Year-to-Date 2014 = 35,903

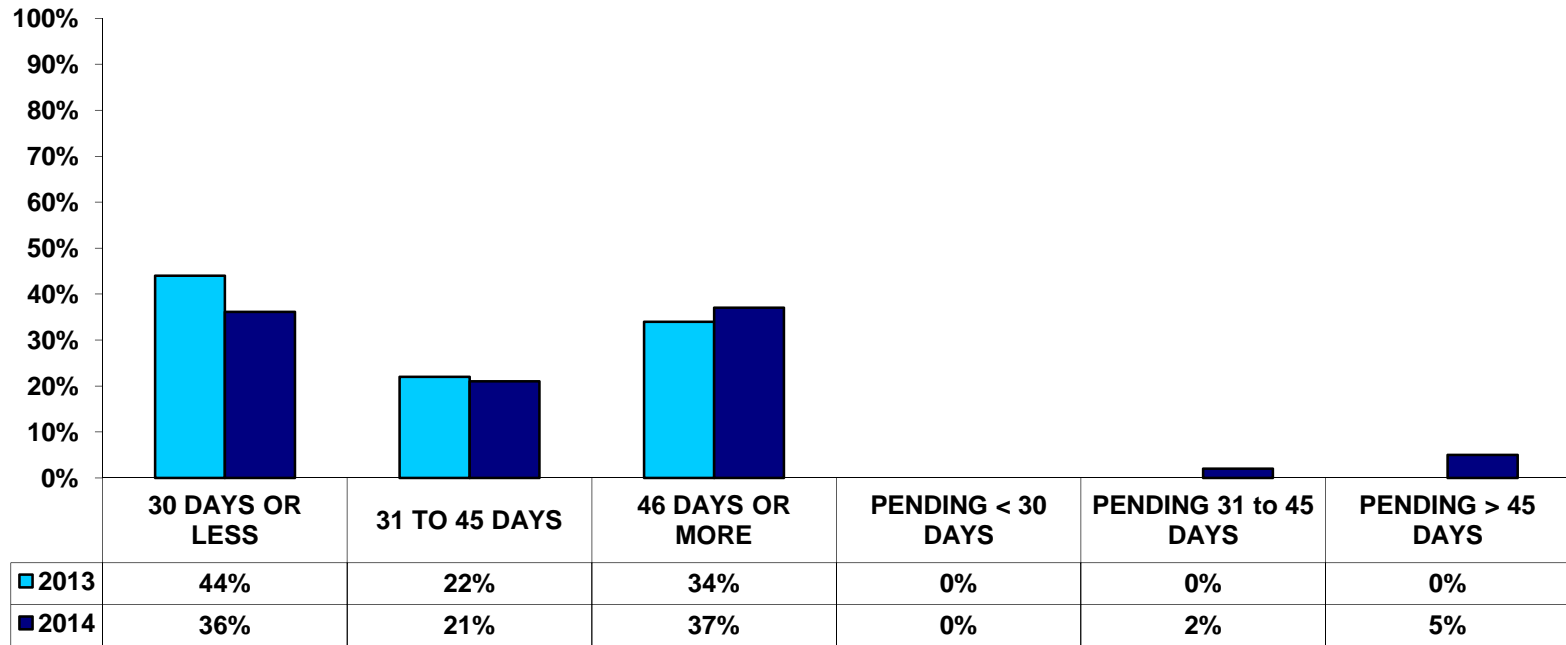
**SCREENED IN TRADITIONAL / SCREENED IN ALTERNATIVE RESPONSE / SCREENED OUT  
REFERRALS BY CATEGORY  
JANUARY - DECEMBER  
2013 / 2014**



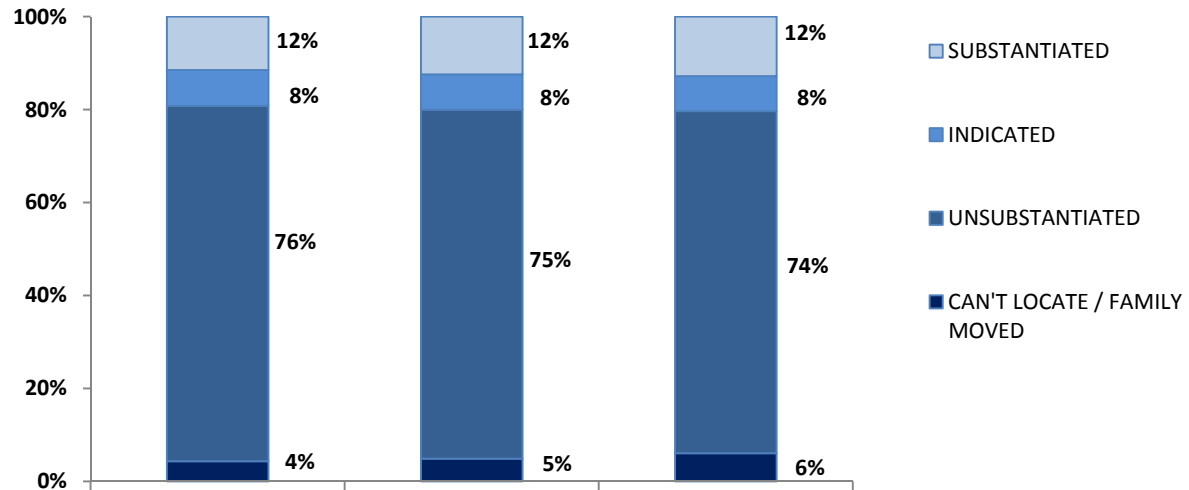
**SCREENED IN TRADITIONAL / SCREENED IN ALTERNATIVE RESPONSE  
CHILD ABUSE & NEGLECT REFERRALS BY ALLEGATION TYPE  
JANUARY - DECEMBER  
2013 / 2014**



**TIME TO CASE DISPOSTION  
SCREENED-IN CHILD ABUSE / NEGLECT REFERRALS  
JANUARY - DECEMBER  
2013 / 2014**

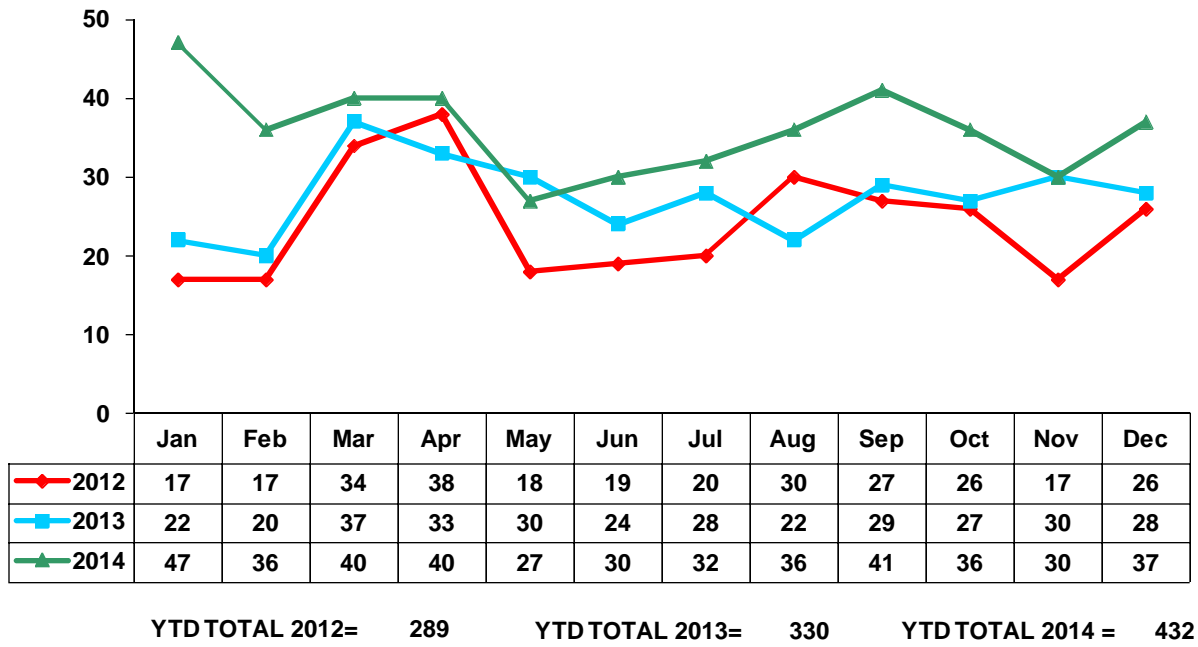


**CASE DISPOSITIONS SCREENED IN & DISPOSED  
CHILD ABUSE / NEGLECT REFERRALS  
JANUARY - DECEMBER  
2012 / 2013 / 2014**



	2012	2013	2014
<b>SUBSTANTIATED</b>	1,576	1,724	1,494
<b>INDICATED</b>	1,060	1,053	878
<b>UNSUBSTANTIATED</b>	10,488	10,410	8,587
<b>CAN'T LOCATE / FAMILY MOVED</b>	595	680	708

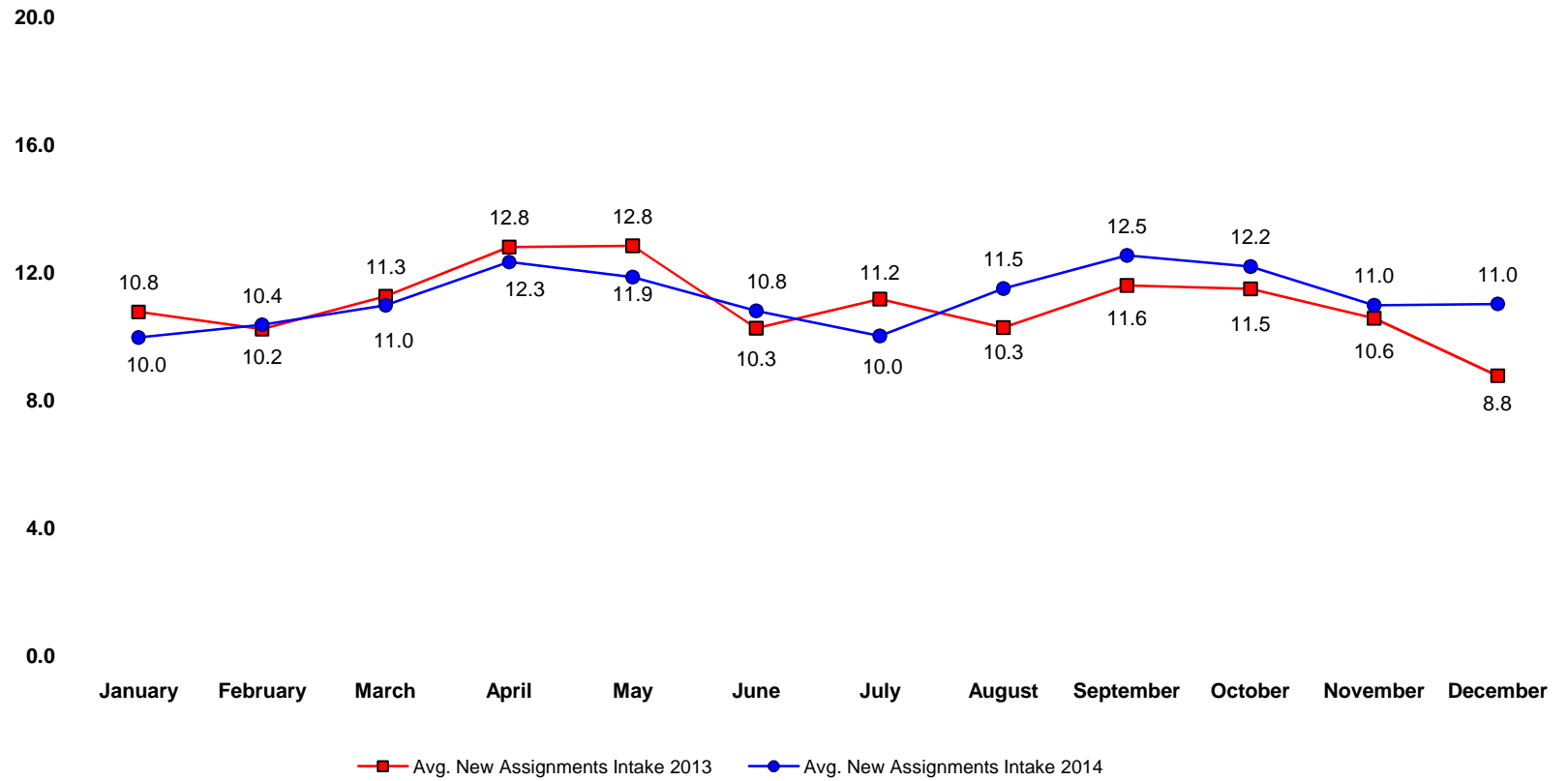
**POSITIVE TOX REFERRALS BY MONTH  
2012 THROUGH 2014**





**AVERAGE MONTHLY NEW CASE ASSIGNMENTS - INTAKE UNITS  
END OF MONTH FIGURES 2013 THROUGH 2014**

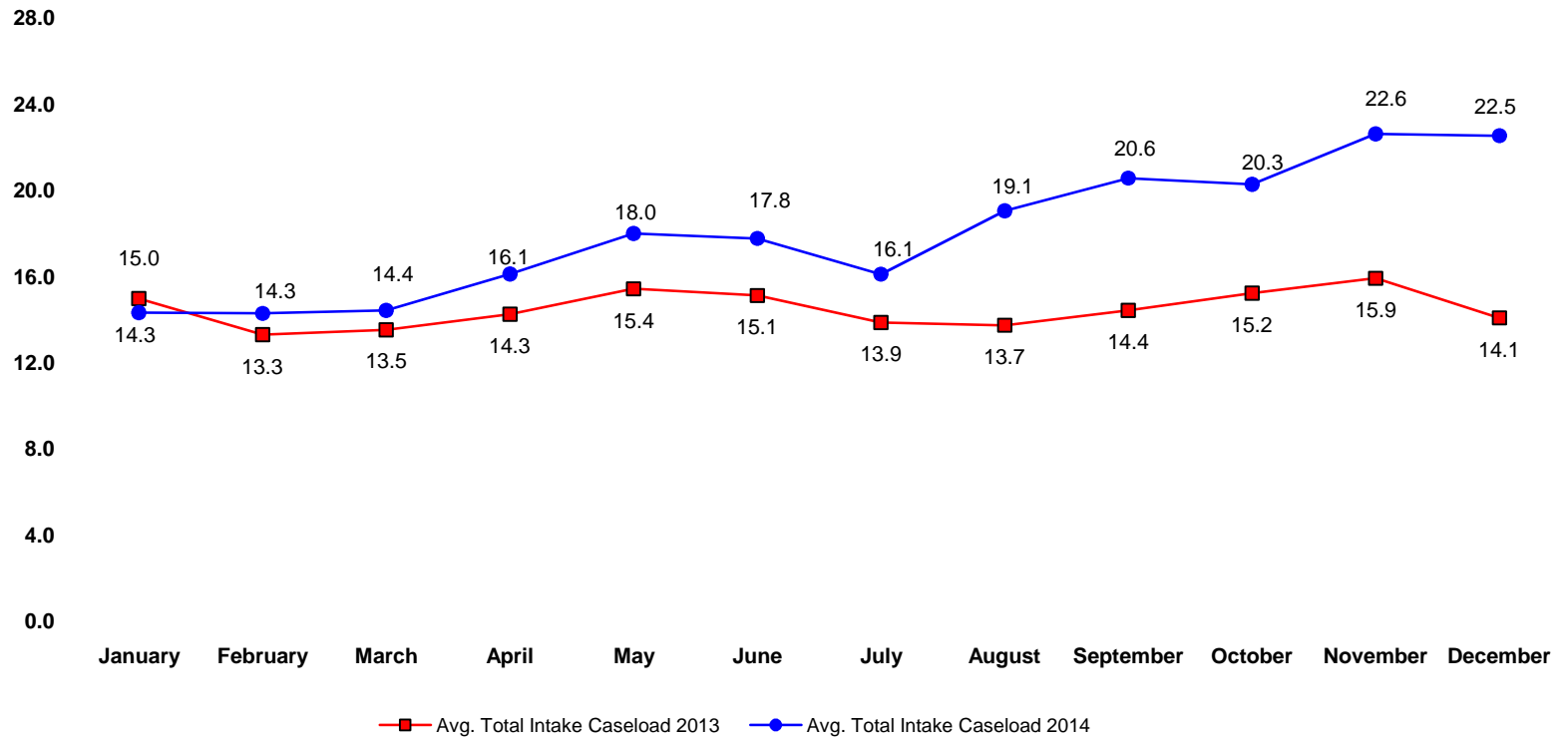
**Year-to-Date Average Per Worker**  
Avg. 2013 = 11.0    Avg. 2014 = 11.2



### AVERAGE TOTAL CASELOAD - INTAKE UNITS END OF MONTH FIGURES 2013 THROUGH 2014

Year-to-Date Average Per Worker

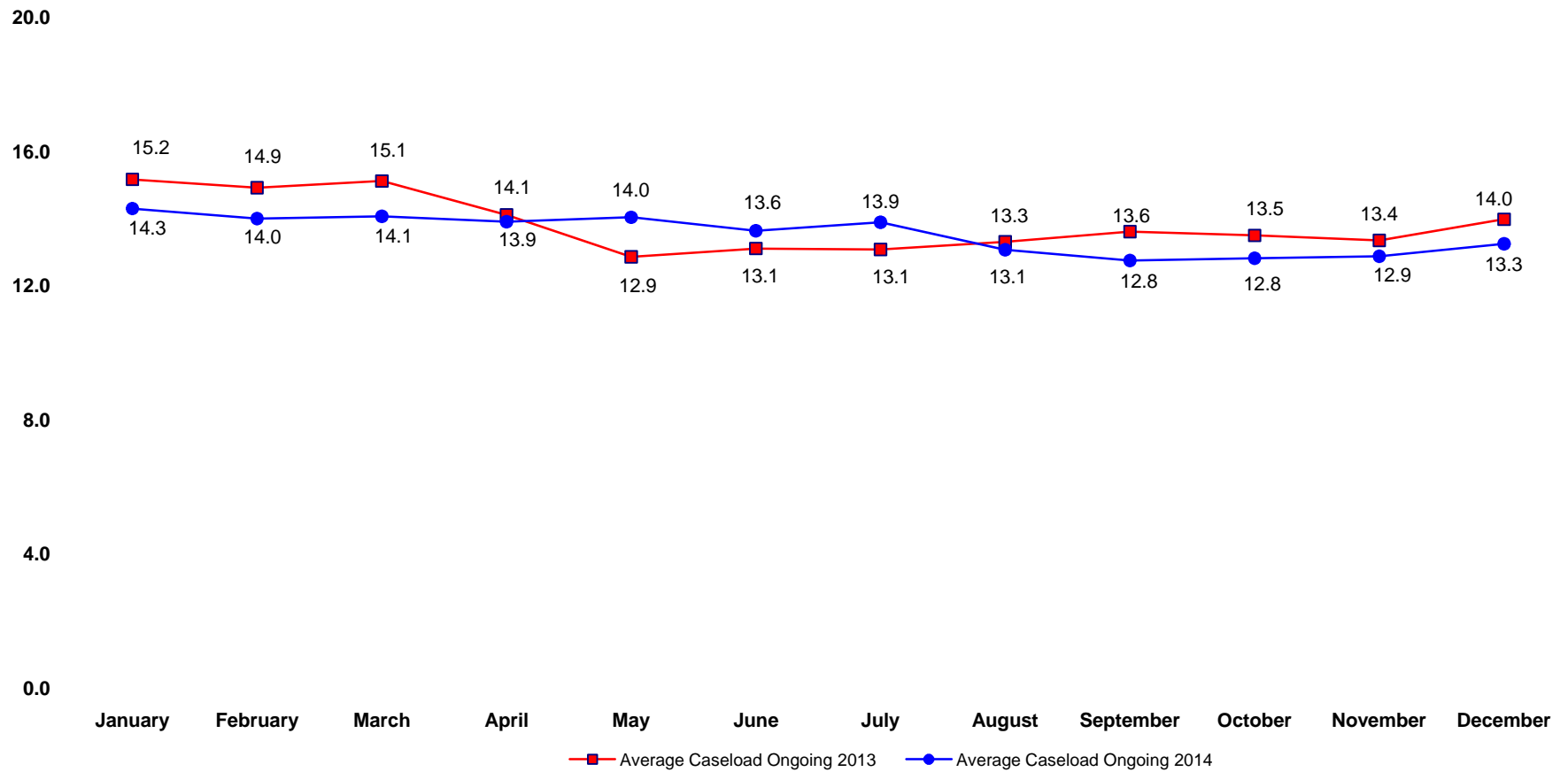
Avg. 2013 = 14.5 Avg. 2014 = 18.0



**AVERAGE TOTAL CASELOAD ONGOING UNITS  
END OF MONTH FIGURES 2013 THROUGH 2014**

**Year-to-Date Average Per Worker**

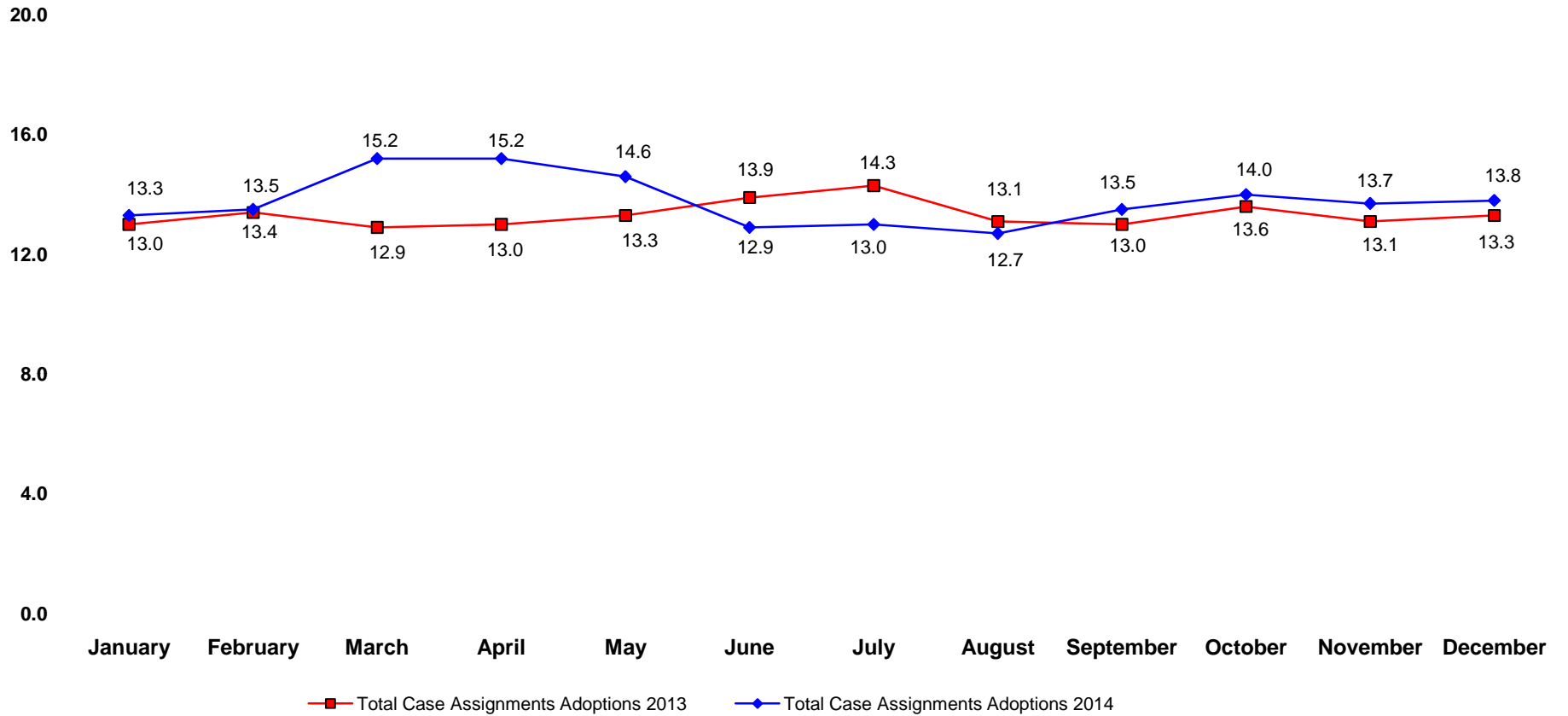
Avg. 2013 = 13.8 Avg. 2014 = 13.6



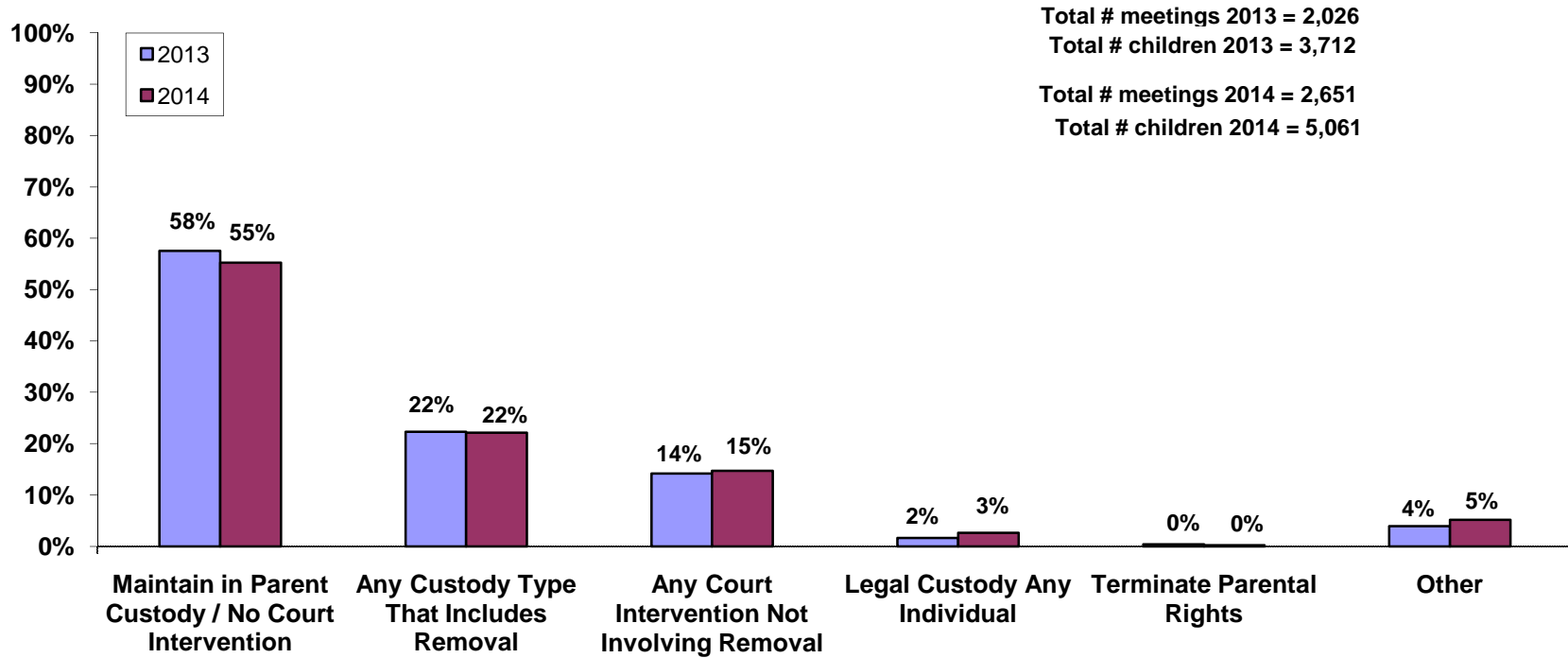
**AVERAGE TOTAL CASELOAD - ADOPTIONS UNIT  
END OF MONTH FIGURES 2013 THROUGH 2014**

**Year-to-Date Average Per Worker**

Avg. 2013 = 13.3    Avg. 2014 = 13.8



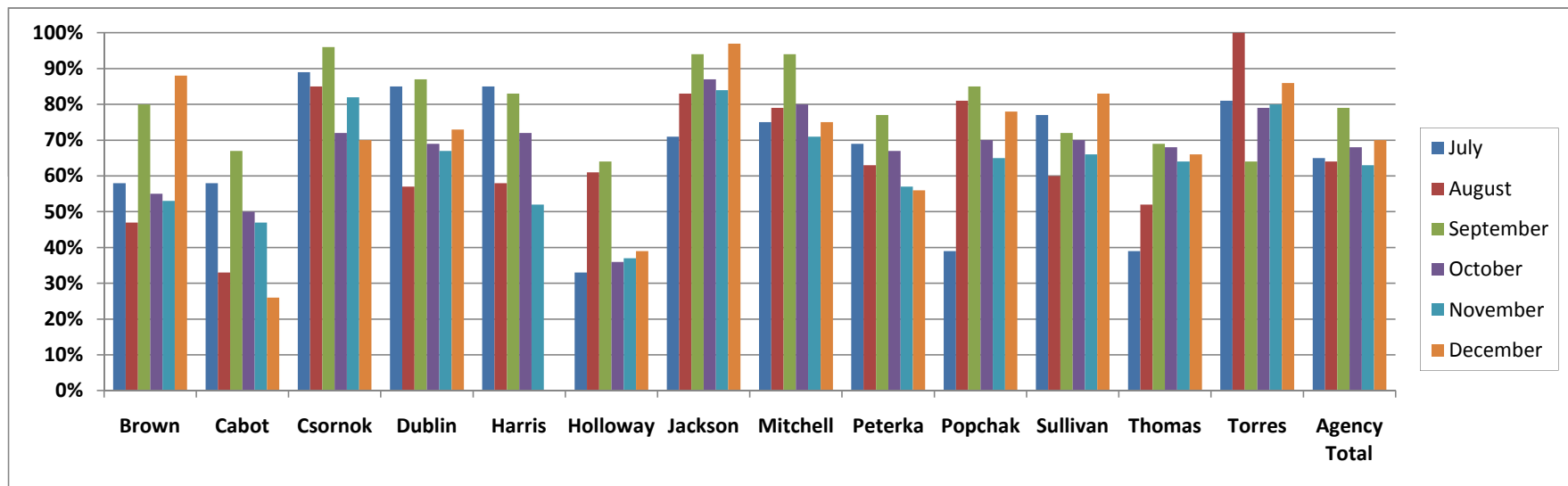
**INITIAL CUSTODY STAFFING RECOMMENDATIONS  
JANUARY - DECEMBER  
2013 / 2014**



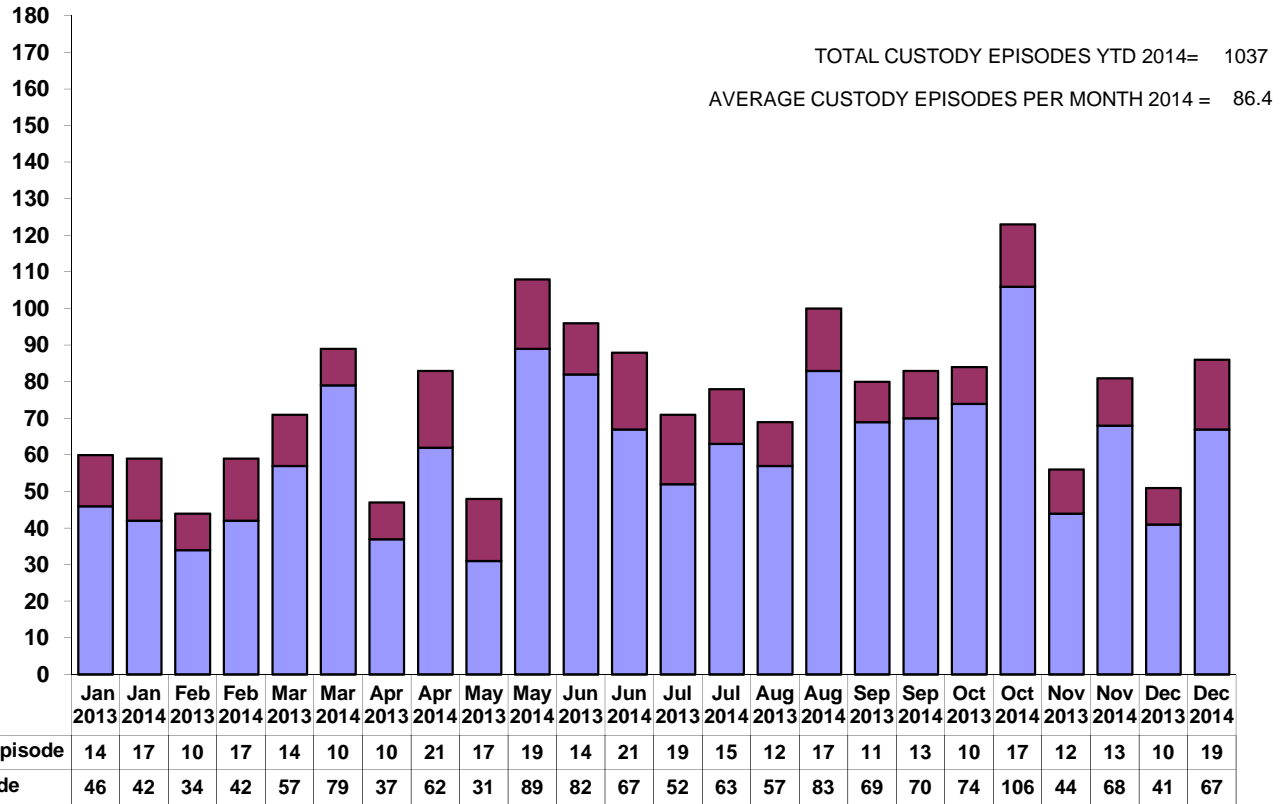
Total # meetings 2013 = 2,026  
 Total # children 2013 = 3,712  
 Total # meetings 2014 = 2,651  
 Total # children 2014 = 5,061

**TIMELY COMPLETION OF TREATMENT OUTCOME REFERRALS  
SUMMARY BY CHIEF & AGENCY TOTAL  
JANUARY - DECEMBER 2014**

Month	Brown	Cabot	Csornok	Dublin	Harris	Holloway	Jackson	Mitchell	Peterka	Popchak	Sullivan	Thomas	Torres	Agency Total
July	58%	58%	89%	85%	85%	33%	71%	75%	69%	39%	77%	39%	81%	65%
August	47%	33%	85%	57%	58%	61%	83%	79%	63%	81%	60%	52%	100%	64%
September	80%	67%	96%	87%	83%	64%	94%	94%	77%	85%	72%	69%	64%	79%
October	55%	50%	72%	69%	72%	36%	87%	80%	67%	70%	70%	68%	79%	68%
November	53%	47%	82%	67%	52%	37%	84%	71%	57%	65%	66%	64%	80%	63%
December	88%	26%	70%	73%	N/A	39%	97%	75%	56%	78%	83%	66%	86%	70%
<b>Avg/Over Last 6 Months</b>	<b>64%</b>	<b>47%</b>	<b>82%</b>	<b>73%</b>	<b>70%</b>	<b>45%</b>	<b>86%</b>	<b>79%</b>	<b>65%</b>	<b>70%</b>	<b>71%</b>	<b>60%</b>	<b>82%</b>	



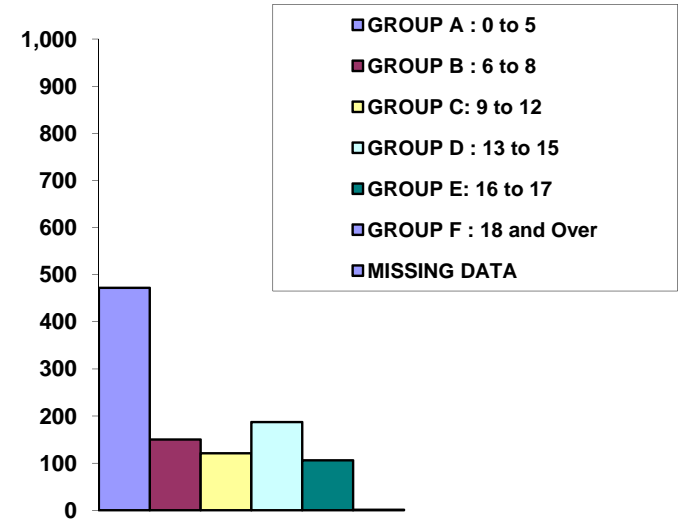
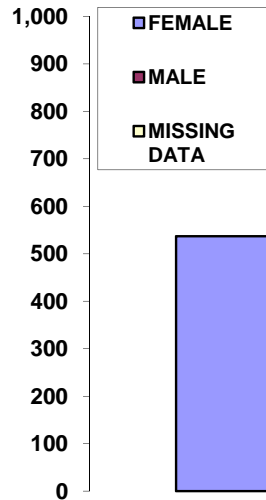
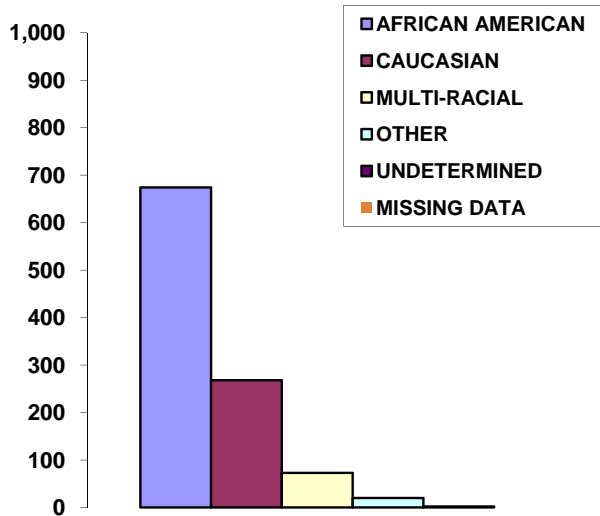
**CUSTODY EPISODES BY MONTH  
2013 / 2014**



\* Children entering custody having a previous episode: count of children entering custody by month who have had at least 1 previous custody episode with Cuyahoga County DCFS.

\* Children entering custody no previous episode: count of children entering custody by month and child has no previous custody episode with Cuyahoga County DCFS

INITIAL CUSTODY ENTRIES BY  
RACE / GENDER / AGE  
JANUARY - DECEMBER 2014



Race	Count	% Of Total
AFRICAN AMERICAN	674	65%
CAUCASIAN	268	26%
MULTI-RACIAL	73	7%
OTHER	20	2%
UNDETERMINED	2	0%
MISSING DATA	0	0%
<b>Total</b>	<b>1037</b>	<b>100%</b>

Gender	Count	% Of Total
FEMALE	537	52%
MALE	500	48%
MISSING DATA	0	0%
<b>Total</b>	<b>1037</b>	<b>100%</b>

Age Group	Count	% Of Total
GROUP A : 0 to 5	472	46%
GROUP B : 6 to 8	150	15%
GROUP C : 9 to 12	121	12%
GROUP D : 13 to 15	187	18%
GROUP E : 16 to 17	106	10%
GROUP F : 18 and Over	1	0%
MISSING DATA	0	0%
<b>Total</b>	<b>1037</b>	<b>100%</b>

Race / 2013	% Of Total 2013
AFRICAN AMERICAN	62%
CAUCASIAN	30%
MULTI-RACIAL	7%
OTHER	1%
UNDETERMINED	0%

Gender / 2013	% Of Total 2013
FEMALE	49%
MALE	51%
MISSING DATA	0%

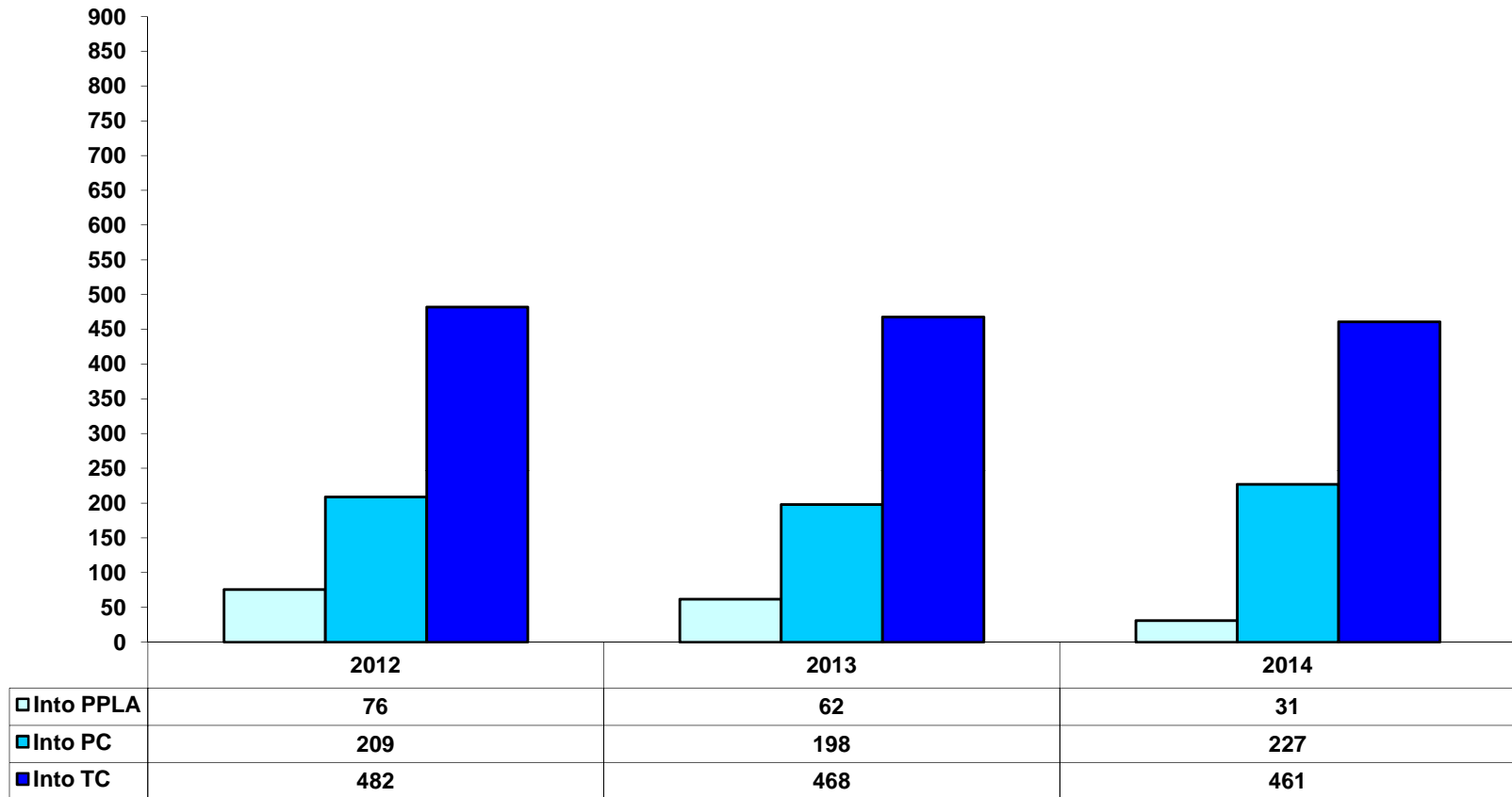
Age Group / 2013	% Of Total 2013
GROUP A : 0 to 5	48%
GROUP B : 6 to 8	9%
GROUP C : 9 to 12	12%
GROUP D : 13 to 15	19%
GROUP E : 16 to 17	11%
GROUP F : 18 and Over	1%
MISSING DATA	0%

\* Race for persons under age 18 / Cuyahoga County  
53% Caucasian / 37% African American / 10% Other - more than 1 race

\* Source: U.S Bureau of the Census, 2010 Census, Summary File 1, PCT12A, PCT12B, PCT12C, PCT12D, PCT12E, PCT12F, PCT12G, and PCT12H.

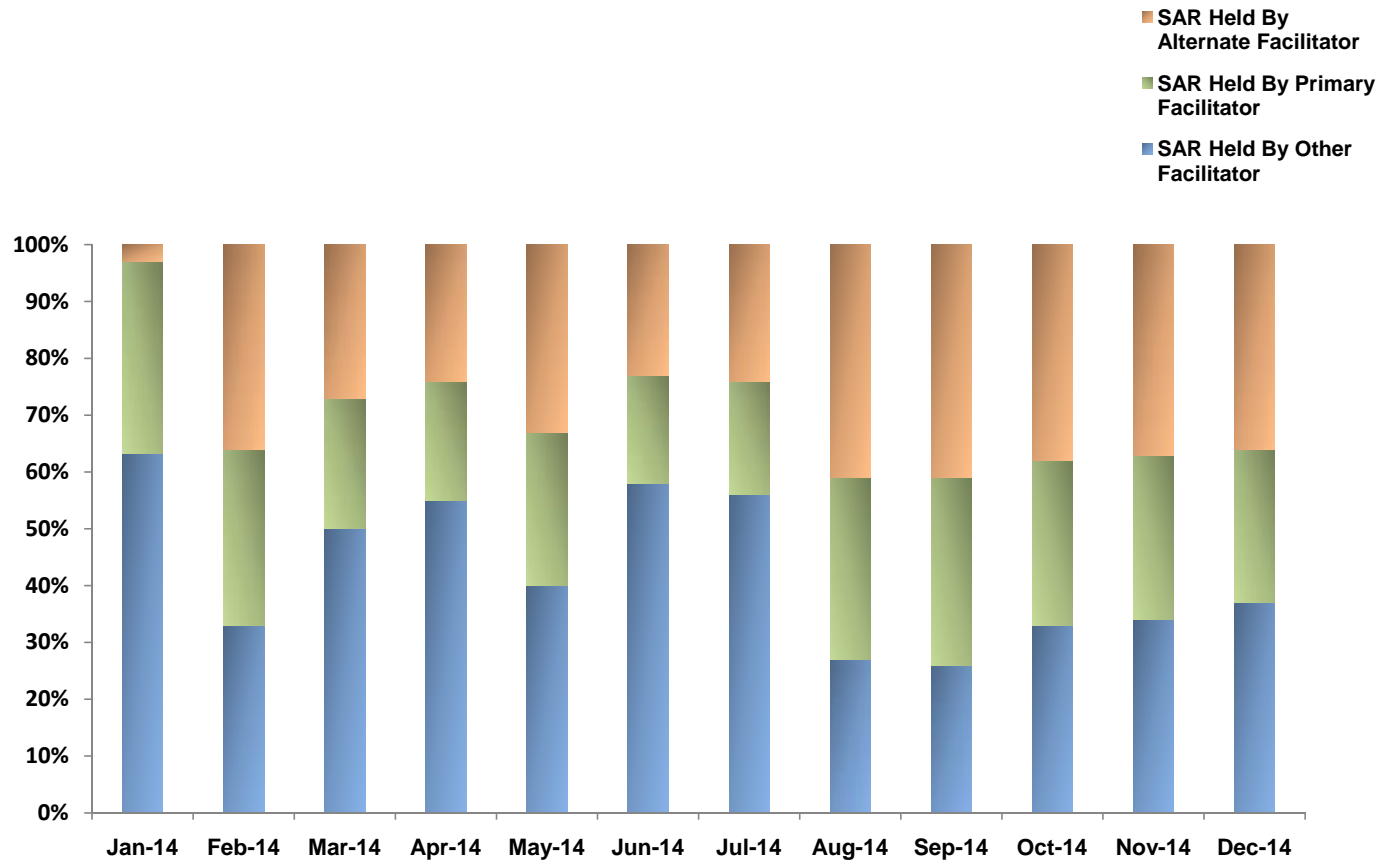


**CUSTODY TRANSITIONS**  
**NUMBER OF CHILDREN COMING INTO PLANNED PERMANENT LIVING ARRANGEMENT (PPLA\*) Status,**  
**PERMANENT CUSTODY STATUS (PC), OR TEMPORARY CUSTODY STATUS(TC)**  
**CUMULATIVE MEASUREMENTS: YEAR-TO-DATE TOTALS THROUGH DECEMBER**  
**2012, 2013 & 2014**



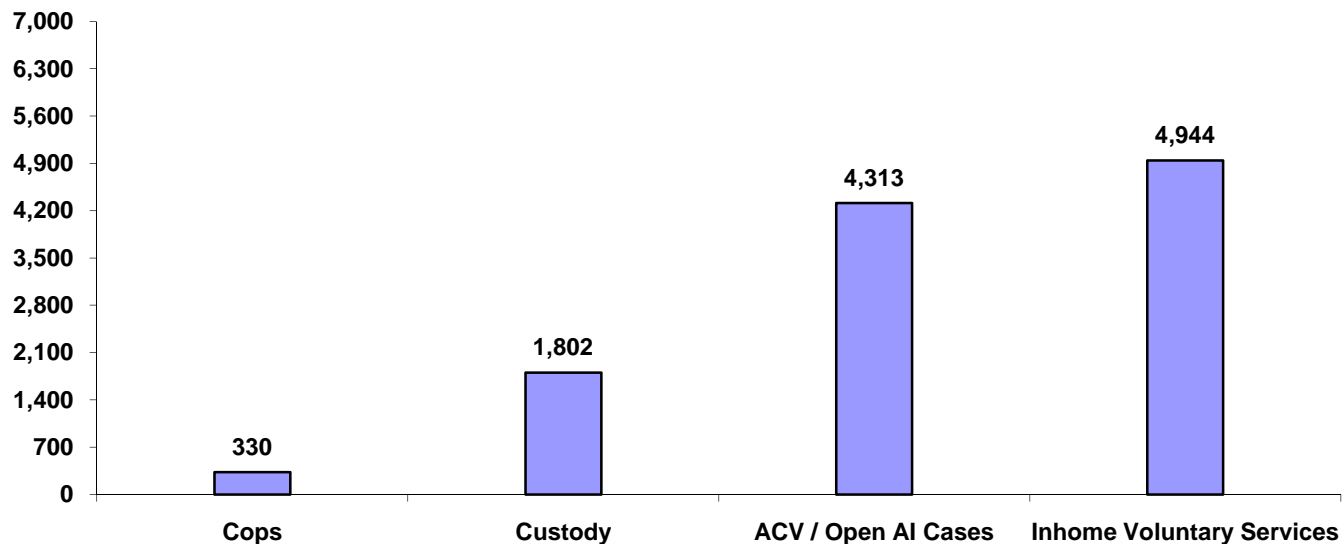
\*PPLA, formerly known as Long Term Foster Care

### SARs Held By Primary / Alternate Case Facilitator January - December 2014



	Jan-14	Feb-14	Mar-14	Apr-14	May-14	Jun-14	Jul-14	Aug-14	Sep-14	Oct-14	Nov-14	Dec-14
<b>SAR Held By Alternate Facilitator</b>	3%	36%	27%	24%	33%	23%	24%	41%	41%	38%	37%	36%
<b>SAR Held By Primary Facilitator</b>	34%	31%	23%	21%	27%	19%	20%	32%	33%	29%	29%	27%
<b>SAR Held By Other Facilitator</b>	63%	33%	50%	55%	40%	58%	56%	27%	26%	33%	34%	37%

**CHILDREN RECEIVING SERVICES ON OPEN CASES  
AT END OF MONTH : DECEMBER 2014**



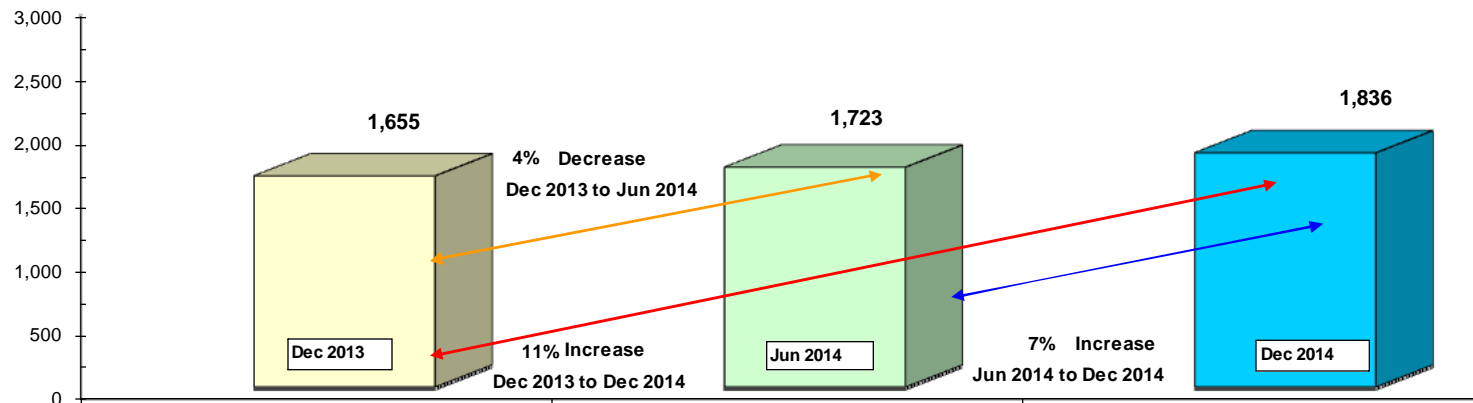
- \* COPS = children in court ordered protective supervision
- \* Custody = children in legal custody of DCFS
- \* ACV/Open AI Cases = distinct count of children who are alleged child victims on open assessment/investigation cases where child is not in COPS and not in agency custody.
- \* Inhome Voluntary Services = children who are active participants in open cases, are listed on case plan and who are not in court ordered protective supervision and are not in custody of DCFS.

**CHILDREN IN PLACEMENT - BY PLACEMENT TYPE  
CURRENT MONTH & PREVIOUS SIX MONTHS  
POINT-IN-TIME MEASURES ( END OF EACH MONTH)  
JUNE 2014 THROUGH DECEMBER 2014**

Month / Yr	Relative Home Count	% of Total	Agency Foster Home Count	% of Total	Network / Shared Foster Home Count	% of Total	Adoptive Home	% of Total	Certified Residential Center	% of Total	Group Home	% of Total	Independent Living	% of Total	Other	% of Total	Total # In Placement
<b>Jun-14</b>	269	16%	227	13%	872	51%	85	5%	139	8%	57	3%	32	2%	42	2%	1,723
<b>Jul-14</b>	268	15%	219	13%	885	51%	95	5%	138	8%	55	3%	30	2%	47	3%	1,737
<b>Aug-14</b>	285	16%	213	12%	873	50%	88	5%	139	8%	56	3%	39	2%	40	2%	1,733
<b>Sep-14</b>	308	18%	205	12%	888	51%	80	5%	138	8%	54	3%	31	2%	45	3%	1,749
<b>Oct-14</b>	319	18%	209	12%	926	52%	72	4%	139	8%	53	3%	34	2%	44	2%	1,796
<b>Nov-14</b>	325	18%	214	12%	937	51%	77	4%	144	8%	50	3%	31	2%	51	3%	1,829
<b>Dec-14</b>	347	19%	208	11%	935	51%	69	4%	140	8%	55	3%	35	2%	47	3%	1,836

**TOTAL NUMBER OF CHILDREN IN PLACEMENT**

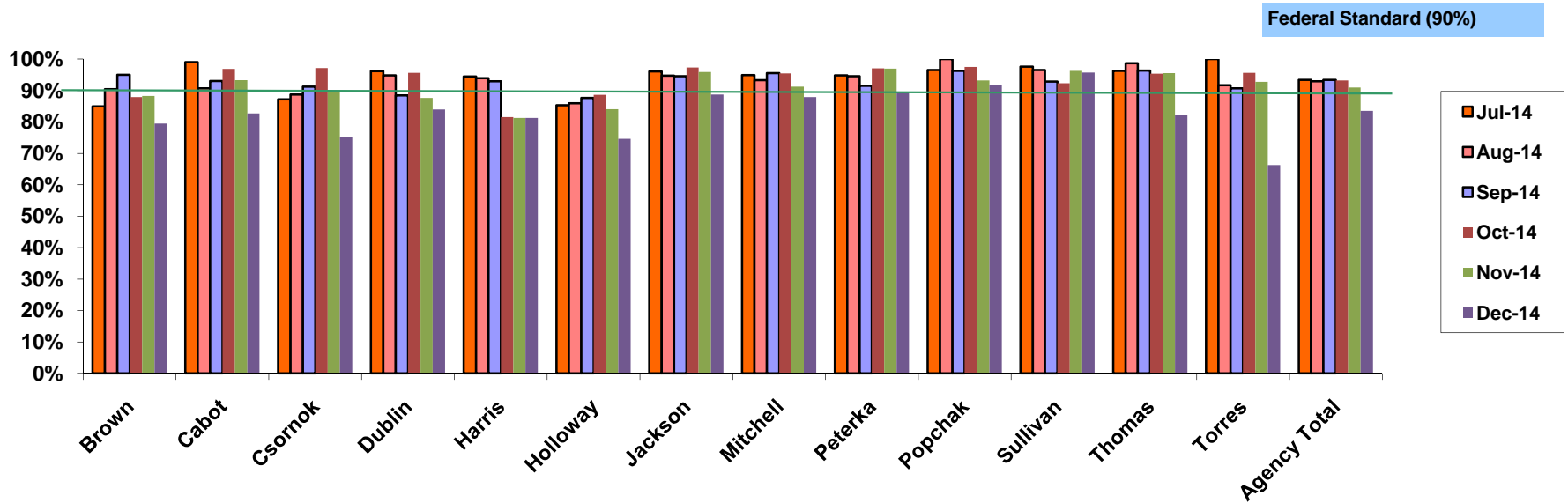
Point in Time Measures at End of Month for December 2013 / June 2014 / December 2014



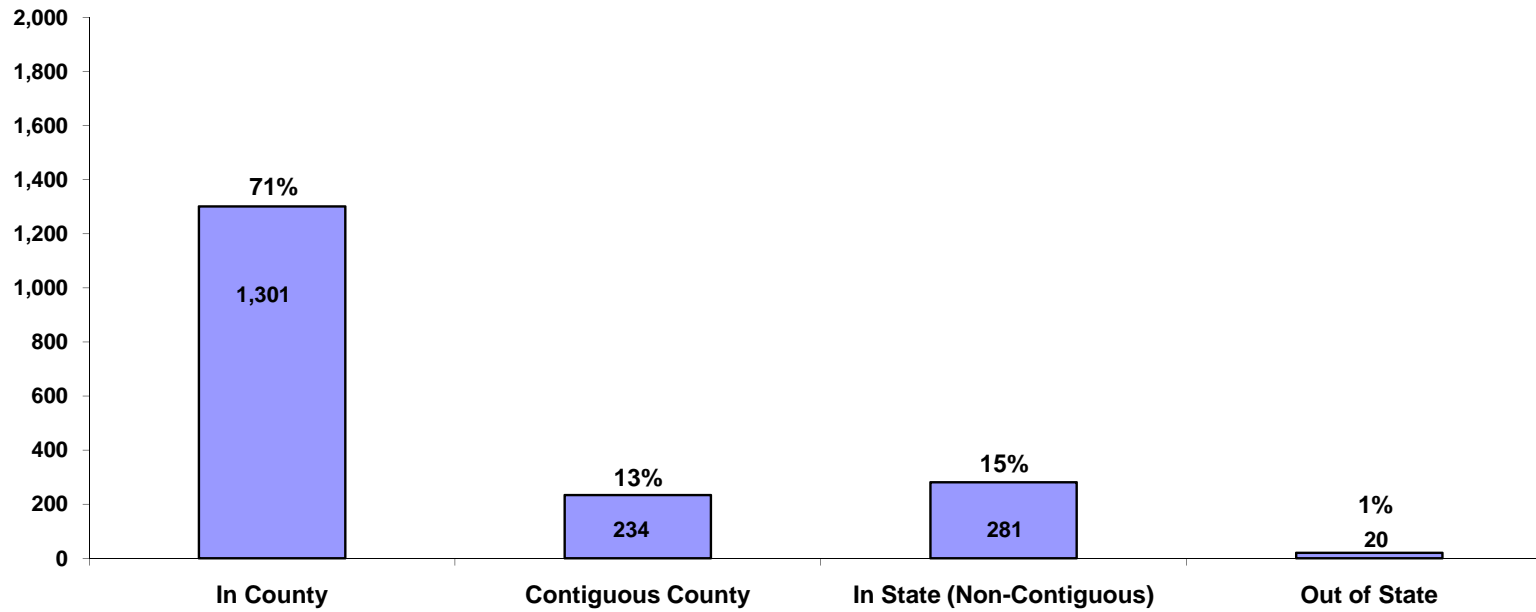
"Other" includes Detention Facilities, Hospital and all other placements . In February 2009 the data source for this report was switched from FACTS to SACWIS even while placement data is temporarily being stored across multiple systems. Because data is stored in multiple systems and for this report may not always be reconciled - these figures may change as SACWIS is updated. Additionally, reports prior to February 2009 would include children in placements monitored by DCFS that were court custody children - those placements are not linked to DCFS in SACWIS and are not counted. Count is of all children in open placements regardless of custody status.

**MONTHLY FACE-TO-FACE SOCIAL SERVICES WORKER / CHILD CONTACTS  
SUMMARY BY CHIEF & AGENCY TOTAL**

Month	Brown	Cabot	Csornok	Dublin	Harris	Holloway	Jackson	Mitchell	Peterka	Popchak	Sullivan	Thomas	Torres	Agency Total
Jul-14	84.9%	99.0%	87.2%	96.2%	94.4%	85.3%	96.1%	94.9%	94.8%	96.5%	97.6%	96.3%	100.0%	93.4%
Aug-14	90.4%	90.7%	88.8%	94.9%	93.9%	85.9%	94.7%	93.3%	94.5%	100.0%	96.5%	98.7%	91.7%	92.9%
Sep-14	95.0%	93.0%	91.3%	88.4%	92.9%	87.7%	94.6%	95.6%	91.5%	96.3%	92.9%	96.3%	90.7%	93.4%
Oct-14	87.9%	96.9%	97.1%	95.7%	81.5%	88.6%	97.4%	95.4%	97.1%	97.5%	92.3%	95.4%	95.7%	93.2%
Nov-14	88.3%	93.3%	89.5%	87.6%	81.3%	84.1%	95.9%	91.2%	97.0%	93.2%	96.3%	95.5%	92.8%	91.0%
Dec-14	79.5%	82.7%	75.2%	84.0%	81.3%	74.7%	88.7%	87.9%	89.4%	91.7%	95.7%	82.4%	66.3%	83.5%
Avg/Over Last 6 Months	87.7%	92.6%	88.2%	91.1%	87.6%	84.4%	94.6%	93.1%	94.1%	95.9%	95.2%	94.1%	89.5%	91.2%



**IN COUNTY , CONTIGUOUS COUNTY, IN STATE, OUT OF STATE PLACEMENTS  
POINT-IN-TIME COUNTS AT END OF DECEMBER 2014**

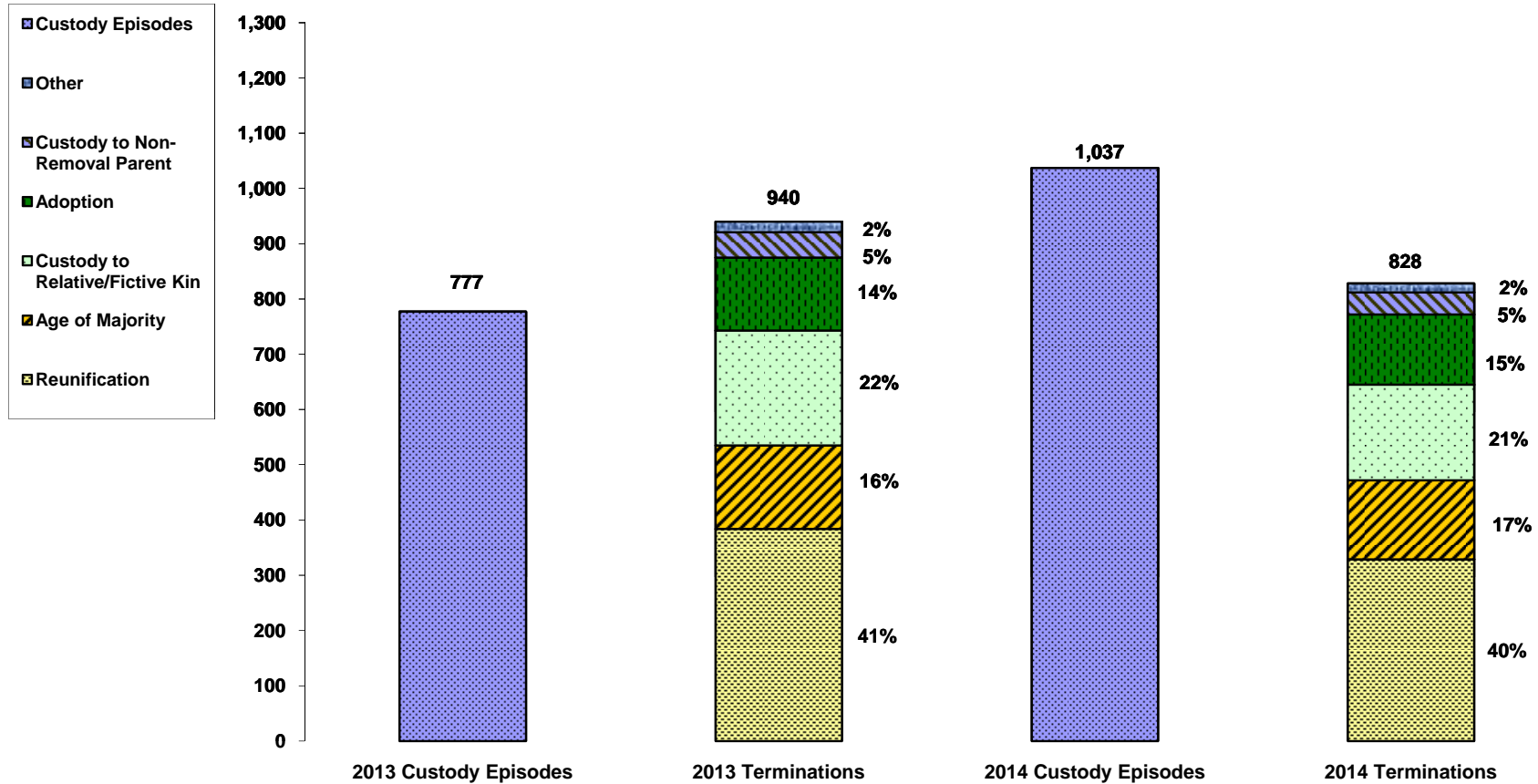


**OUT OF COUNTY PLACEMENTS AS OF 11/30/2014**

	ADOPTIVE	APPROVED NON-RELATIVE	APPROVED RELATIVE	RESIDENTIAL CENTER	EMERGENCY SHELTER	FOSTER HOME	GROUP HOME	DETENTION FACILITY	INDEPENDENT LIVING	LICENSED MEDICAL FACILITY	TOTAL
OUT OF COUNTY / IN OHIO	24	1	48	50	0	386	4	1	1	0	515
OUT OF STATE	5	1	5	3	0	6	0	0	0	0	20

\* Contiguous counties include: Geauga, Lake, Lorain, Medina, Portage, Summit

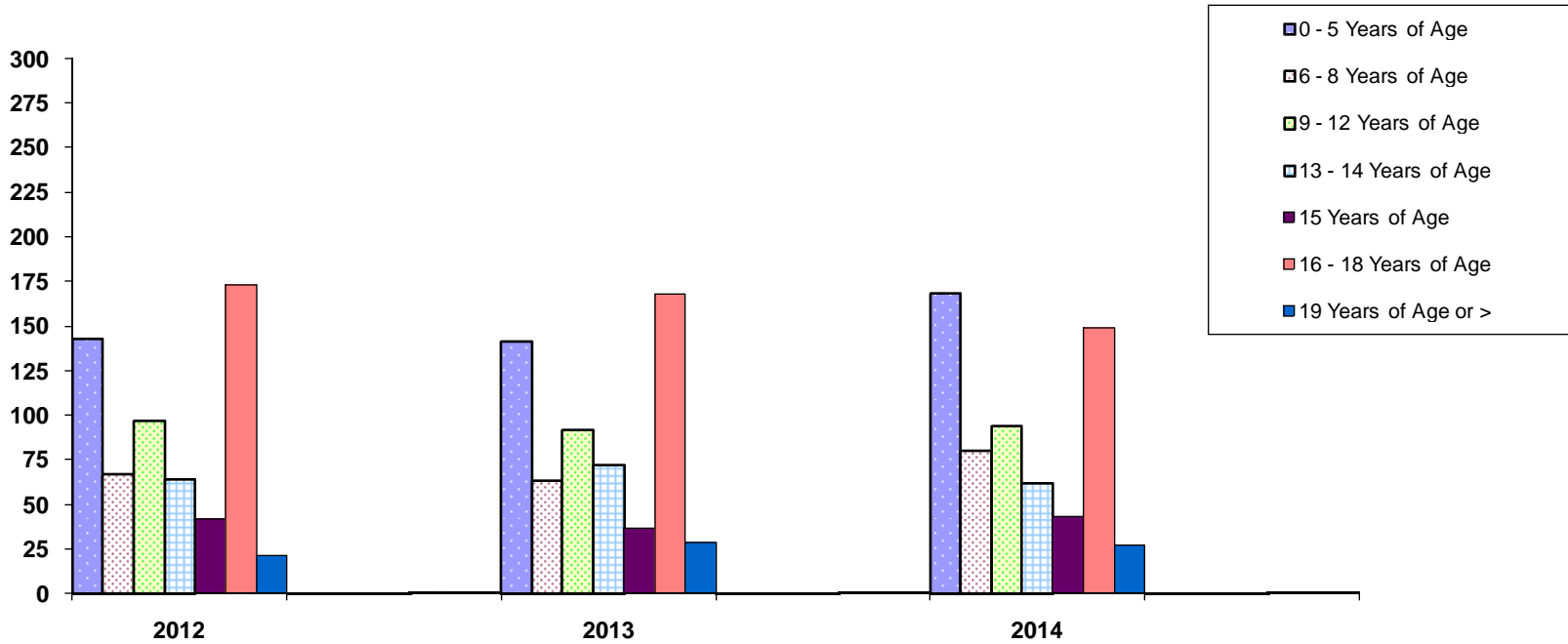
**CUSTODY TERMINATIONS BY TYPE  
 COMPARED WITH YEAR-TO-DATE TOTAL NUMBER OF INITIAL CUSTODIES  
 JANUARY - DECEMBER  
 2013 / 2014**



	Reunification	Age of Majority	Custody to Relative / Fictive Kin	Adoption	Custody To Non-Removal Parent	* Other
2013	384	151	208	132	46	19
2014	329	143	173	127	40	16

\* Other includes, Child AWOL > 30 days, child fatality, and custody to another agency.

**CHILDREN IN PERMANENT CUSTODY BY AGE  
POINT-IN-TIME MEASURE AT END OF DECEMBER  
2012, 2013 & 2014**



	2012		2013		2014	
	Count	% of PC Children	Count	% of PC Children	Count	% of PC Children
<b>0 - 5 Years of Age</b>	143	24%	141	23%	168	27%
<b>6 - 8 Years of Age</b>	67	11%	63	11%	80	13%
<b>9 - 12 Years of Age</b>	97	16%	92	15%	94	15%
<b>13 - 14 Years of Age</b>	64	11%	72	12%	62	10%
<b>15 Years of Age</b>	42	7%	37	6%	43	7%
<b>16 - 18 Years of Age</b>	173	29%	168	28%	149	24%
<b>19 Years of Age or &gt;</b>	21	2%	29	5%	27	4%
<b>Total</b>	<b>607</b>	<b>100%</b>	<b>602</b>	<b>100%</b>	<b>623</b>	<b>100%</b>

\* Count includes children who were in open permanent custody or permanent surrender custody status and who were in placement on last day of month



**TOTAL # of CHILDREN EXITING CUSTODY BY AGE OF MAJORITY  
BY FINAL CUSTODY TYPE / AGE AT EPISODE BEGINNING / LENGTH OF STAY  
JANUARY - DECEMBER 2014**

Month	Permanent Commitment	PPLA	Other	Total # Children Exiting by Emancipation For Month
January	7	1	4	12
February	6	1	3	10
March	0	3	1	4
April	6	2	2	10
May	2	1	1	4
June	9	6	2	17
July	9	4	2	15
August	15	13	4	32
September	8	7	1	16
October	4	1	2	7
November	5	3	3	11
December	4	1	0	5
<b>YTD Total</b>	<b>75</b>	<b>43</b>	<b>25</b>	<b>143</b>

\* Number of children exiting by age of majority in 2013 = 150

**Age of Children Who Exited by Emancipation  
At the Time Custody Episode Began**

Age at Custody Start	Count	%
Under Age 12	36	25%
Age 13 to 14	29	20%
Age 15 to 16	50	35%
Age 17 or >	28	20%
<b>Total</b>	<b>143</b>	

**Number of Custody Months For Children  
Exiting By Age of Majority**

Months in Custody	Count	%
0-12	13	9%
13-24	15	10%
25-36	22	15%
37 or >	93	66%
<b>Total</b>	<b>143</b>	

NOTE: count for past months are updated with each new report as SACWIS historical data may change causing data to differ from those in previous versions of this report.