



Cuyahoga County Division of Children and Family Services  
Thomas Pristow, Director

# Year End Statistical Report

## January - December 2015

**Division of Children & Family Services, 3955 Euclid Ave., Cleveland, OH 44115 (216) 431-4500**

TDD: Ohio Relay Service # is 1-800-750-0750 {NOTE: For questions about this report, you may call (216) 881-4125}

**DCFS MONTHLY STATISTICAL REPORT**

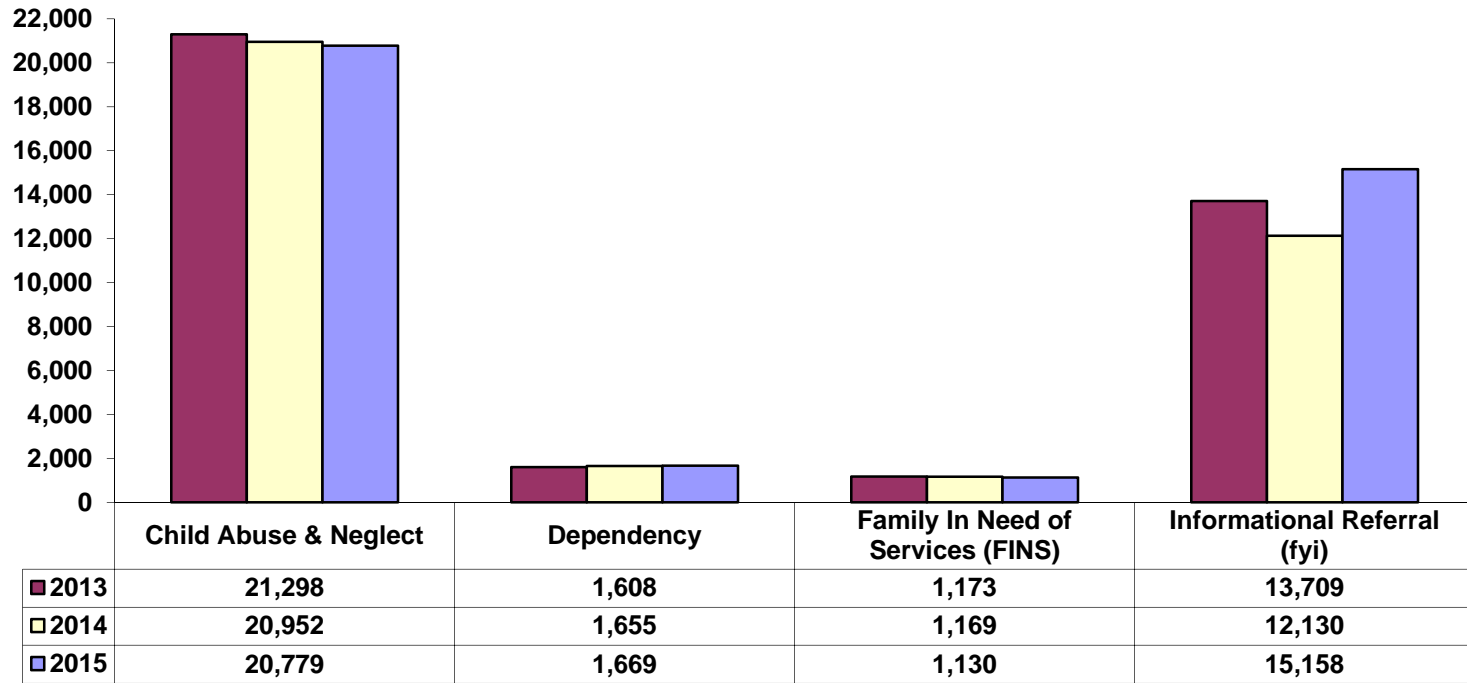
**TABLE OF CONTENTS**

REFERRALS BY CATEGORY-----	1
REFERRAL SCREENING DECISIONS-----	2
POSITIVE TOX REFERRALS-----	3
DISPOSED CHILD ABUSE & NEGLECT REFERRALS-----	4
OPEN CASES BY CATEGORY-----	5
CHILDREN RECEIVING SERVICES ON OPEN CASES-----	6
CHILDREN IN OUT-OF-HOME CARE / PLACEMENT / CUSTODY TYPES-----	7
IN COUNTY / CONTIGUOUS COUNTY / IN STATE / OUT OF STATE PLACEMENTS -----	8
CHILDREN IN OUT-OF-HOME CARE / DEMOGRAPHICS -----	9
CHILDREN WAITING FOR ADOPTION -----	10
CUSTODY EPISODES / TERMINATIONS-----	11
CHILDREN EXITING CARE BY AGE OF MAJORITY-----	12

**ABOUT THIS REPORT:**

Except where noted the source for all data used in this report is the Ohio Statewide Automated Child Welfare Information System (SACWIS) as of the last day of the reporting period. CCDCFS converted to this system on December 9th of 2008. In SACWIS data is subject to change as it is continually being corrected and updated. This may cause statistics found in previous reports to be inconsistent with statistics found in more recent reports, even when the data pertains to the same time period. The statistical report was converted from a monthly to a quarterly document beginning in 2015.

**REFERRALS BY CATEGORY  
JANUARY - DECEMBER  
2013 / 2014 / 2015**

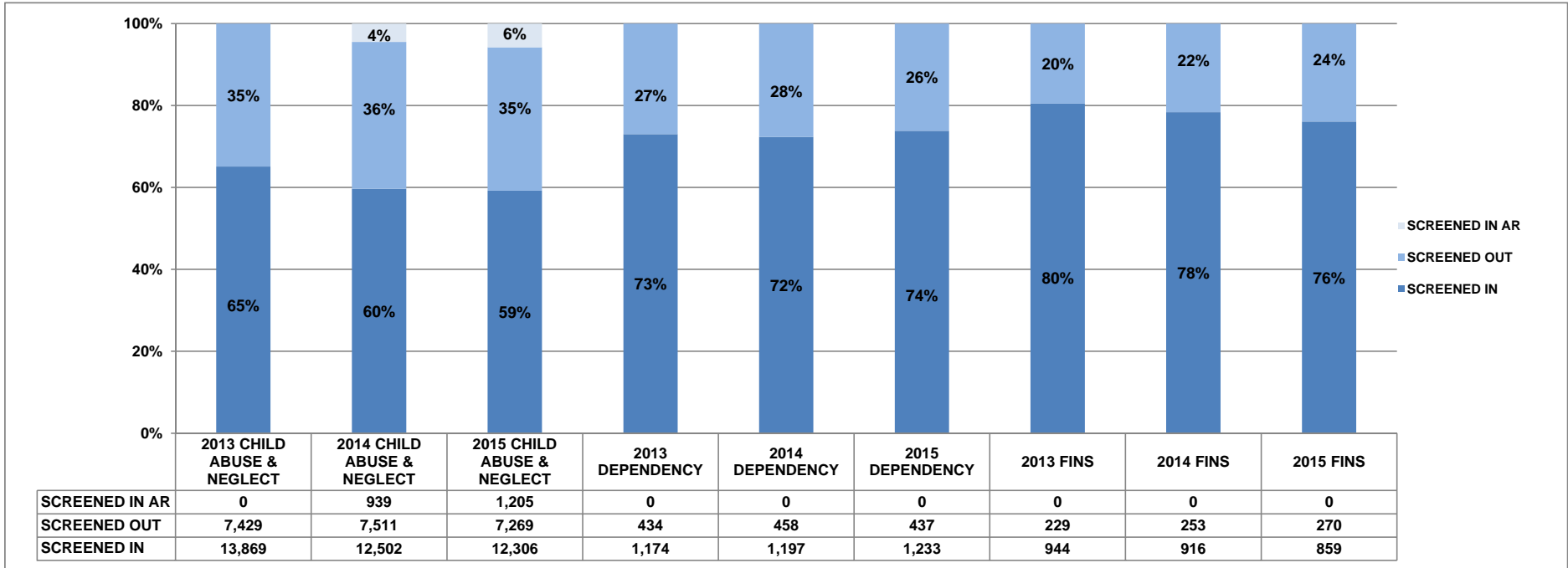


Year-to-Date 2013 = 37,788

Year-to-Date 2014 = 35,906

Year-to-Date 2015 = 38,736

**REFERRAL SCREENING DECISIONS  
JANUARY - DECEMBER  
2013 / 2014 / 2015**



**\* Count of Families With Screened In Abuse & Neglect Referral**

2013 = 10,039  
2014 = 9,928  
2015 = 10,045

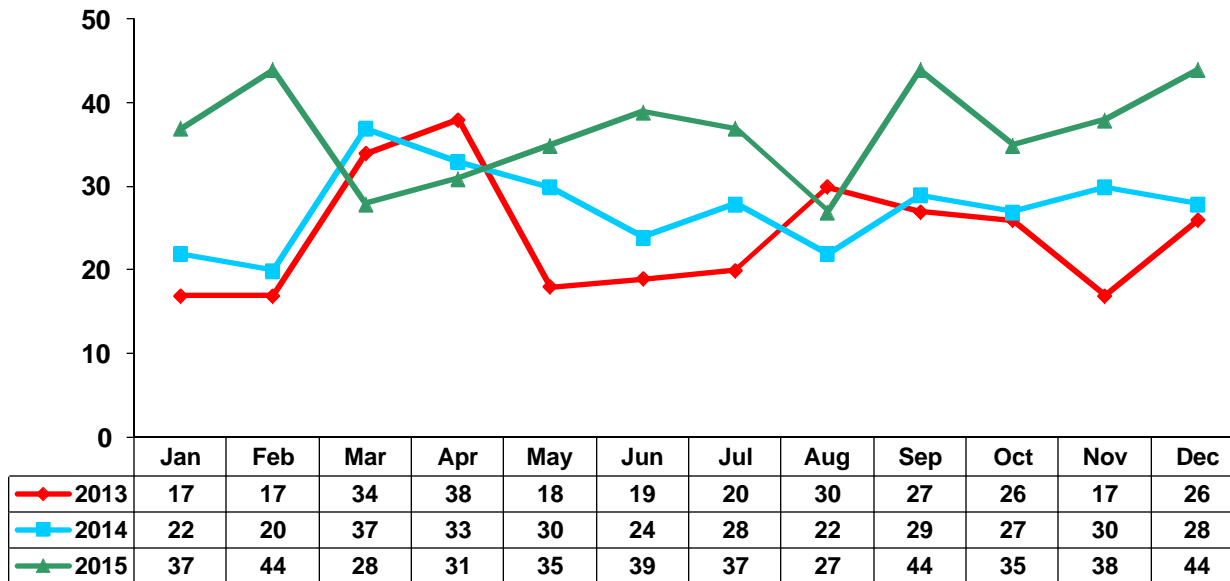
**\* Count of Families With Screened In Dependency Referral**

2013 = 1,059  
2014 = 1,086  
2015 = 1,104

**\* Count of Families With Screened In FINS Referral**

2013 = 832  
2014 = 826  
2015 = 779

### POSITIVE TOX REFERRALS BY MONTH 2013 THROUGH 2015

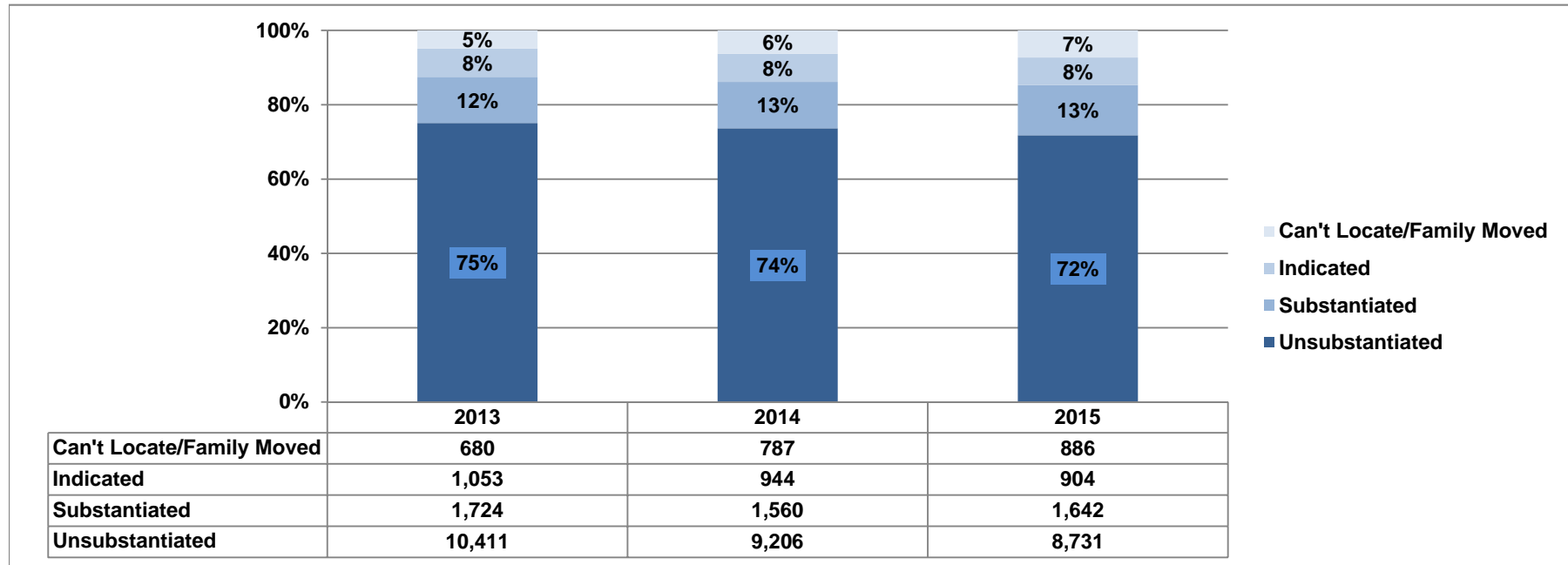


YTD TOTAL 2013 = 289

YTD TOTAL 2014 = 330

YTD TOTAL 2015 = 439

**DISPOSED CHILD ABUSE & NEGLECT REFERRALS  
ABUSE NEGLECT REFERRALS RECEIVED ENTERED JANUARY - DECEMBER  
2013 / 2014 / 2015**

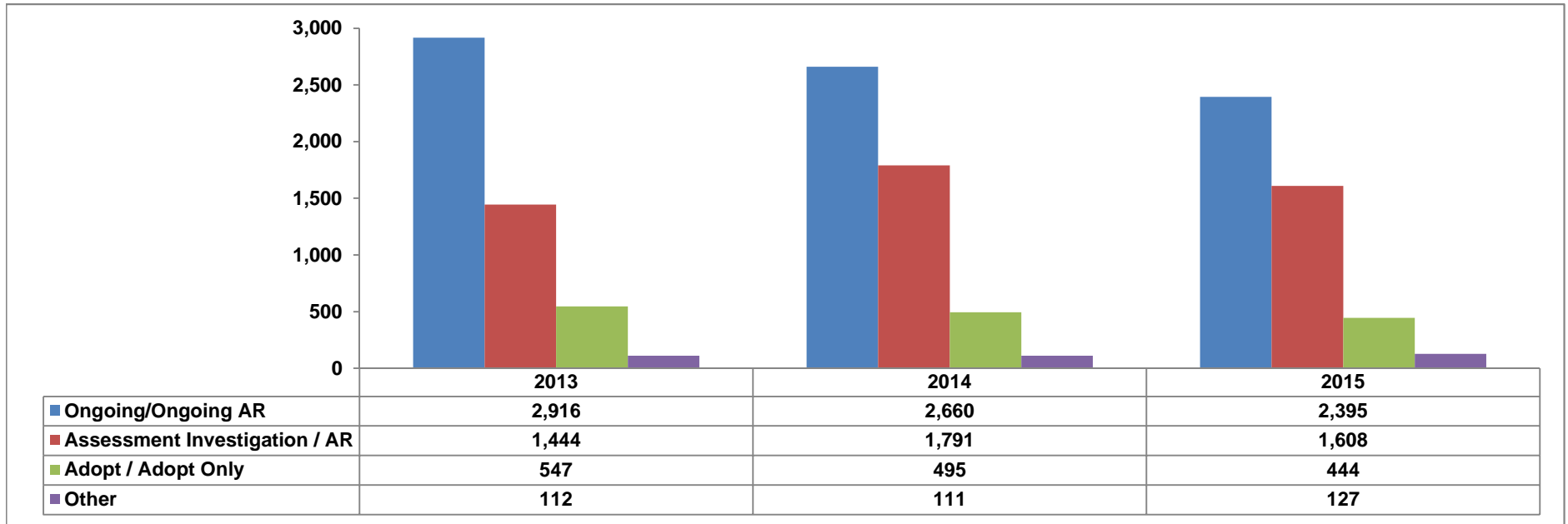


**\*\* Children With Substantiated Abuse & Neglect by Allegation Type (2015)**

Emotional Maltreatment = 16  
 Medical Neglect = 52  
 Neglect = 1,087  
 Physical Abuse = 1,145  
 Sexual Abuse = 116

**\* Families With Substantiated Abuse & Neglect Referral (2015) = 1,530**  
**\* Count of Children With Substantiated Abuse & Neglect Referrals (2015) = 2,231**

**OPEN CASES  
DECEMBER 31st  
2013/2014/2015**



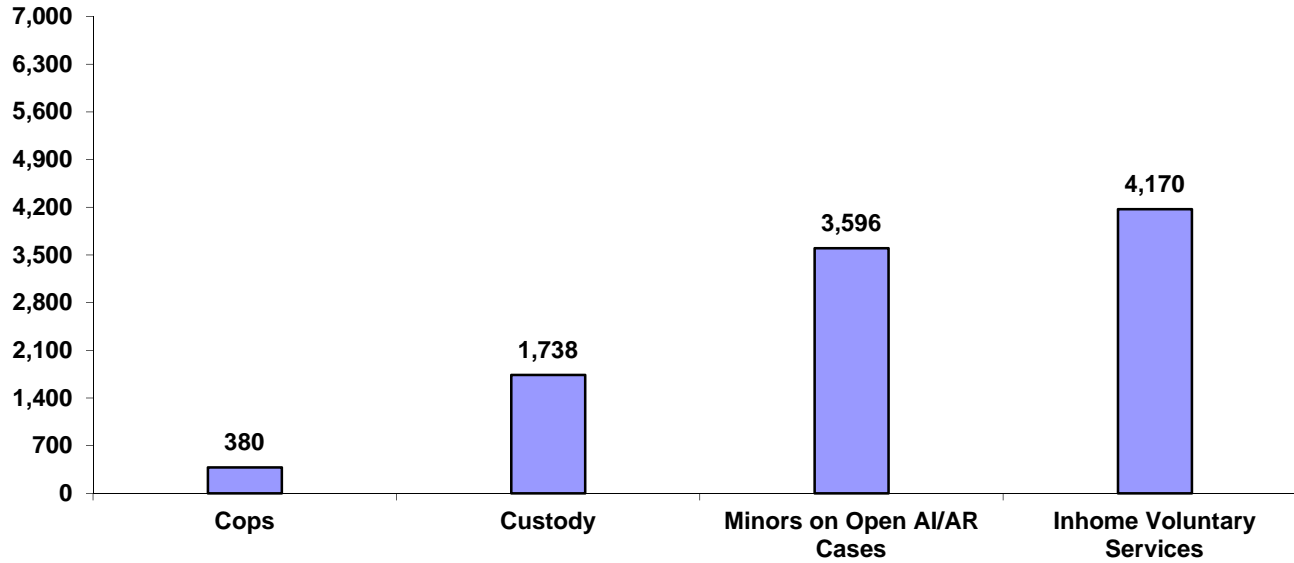
**Total Open Cases 12/31/2013 = 5,019**

**Total Open Cases 12/31/2014 = 5,057**

**Total Open Cases 12/31/2015 = 4,574**

\* Other includes: ICAMA (Interstate compact on adoption & medical assistance), ICPC (Interstate compact on placement of children) and emancipated youth

**CHILDREN RECEIVING SERVICES ON OPEN CASES  
DECEMBER 31, 2015**

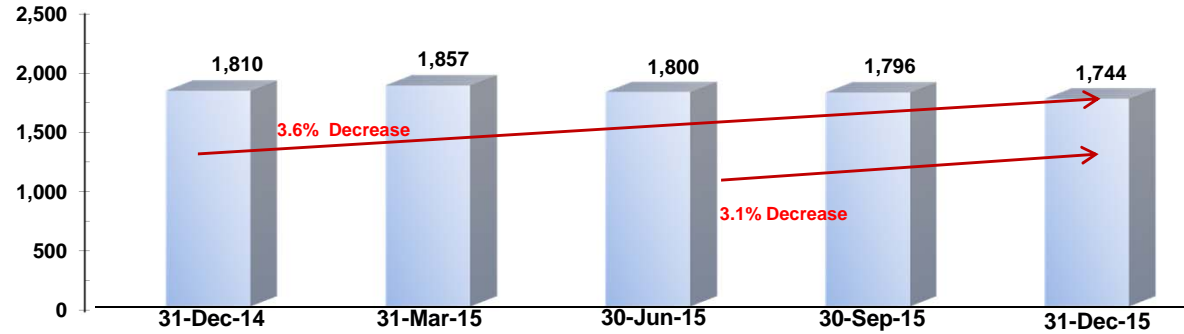


- \* COPS = children in court ordered protective supervision
- \* Custody = children in out of home care and legal custody of DCFS
- \* Minors on open AI/AR cases = child is not in custody or protective supervision. Child is active case participant in open AI/AR case
- \* Inhome Voluntary Services = children who are active participants in open cases, are listed on case plan and who are not in court ordered protective supervision and are not in custody of DCFS.



**CHILDREN IN OUT-OF-HOME CARE  
PLACEMENT / CUSTODY TYPES**

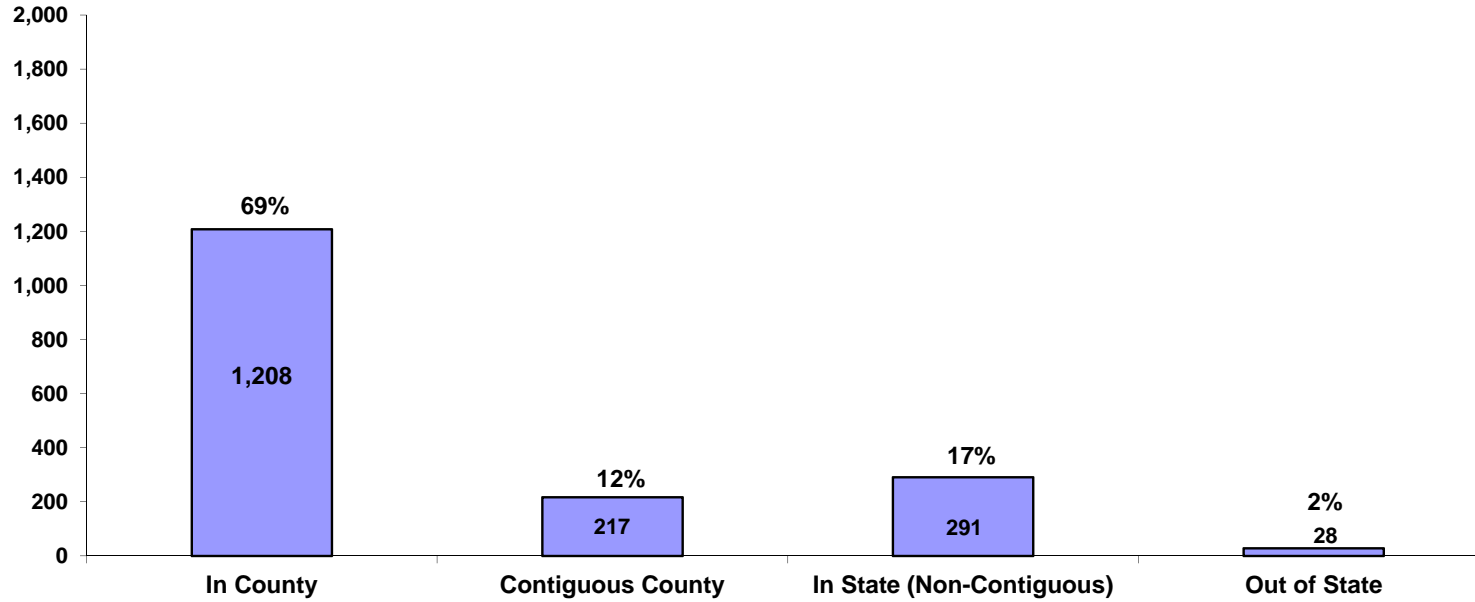
Date	Adoptive Home		Relative / Fictive Kin		DCFS Foster Home		Network Foster Home		Group Home		Certified Residential Center		Independent Living		Other *		Total N Children In Placement
	Count	% Of Total	Count	% Of Total	Count	% Of Total	Count	% Of Total	Count	% Of Total	Count	% Of Total	Count	% Of Total	Count	% Of Total	
31-Dec-14	65	4%	360	20%	254	14%	870	48%	55	3%	142	8%	32	2%	32	2%	1,810
31-Mar-15	86	5%	371	20%	245	13%	887	48%	54	3%	154	8%	27	1%	33	2%	1,857
30-Jun-15	75	4%	364	20%	227	13%	874	49%	56	3%	140	8%	33	2%	31	2%	1,800
30-Sep-15	53	3%	406	23%	202	11%	888	49%	53	3%	128	7%	30	2%	36	2%	1,796
31-Dec-15	57	3%	400	23%	196	11%	869	50%	52	3%	120	7%	22	1%	28	2%	1,744



31-Dec	2014	
Agency Legal Status	N	%
Emergency Custody	296	16%
Temporary Custody	761	42%
Permanent Custody	623	34%
PPLA	104	6%
Other	26	1%

31-Dec	2015	
Agency Legal Status	N	%
Emergency Custody	381	22%
Temporary Custody	706	40%
Permanent Custody	573	33%
PPLA	58	3%
Other	26	1%

**IN COUNTY , CONTIGUOUS COUNTY, IN STATE, OUT OF STATE PLACEMENTS  
DECEMBER 31, 2015**

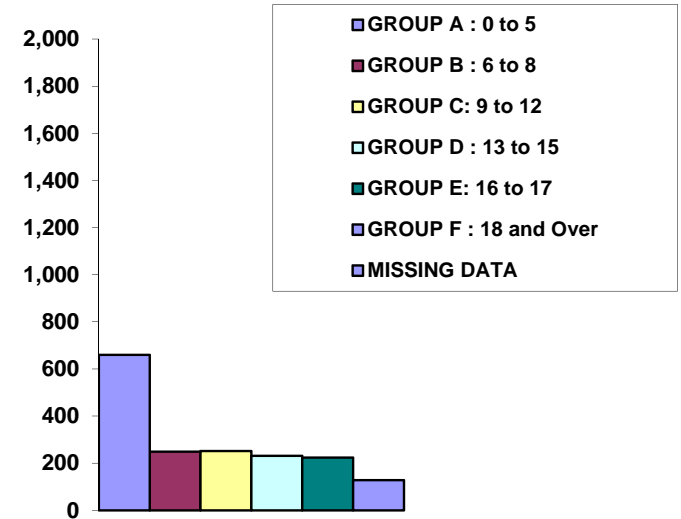
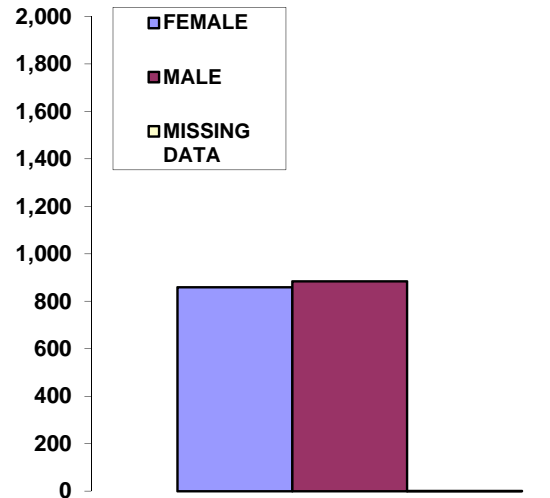
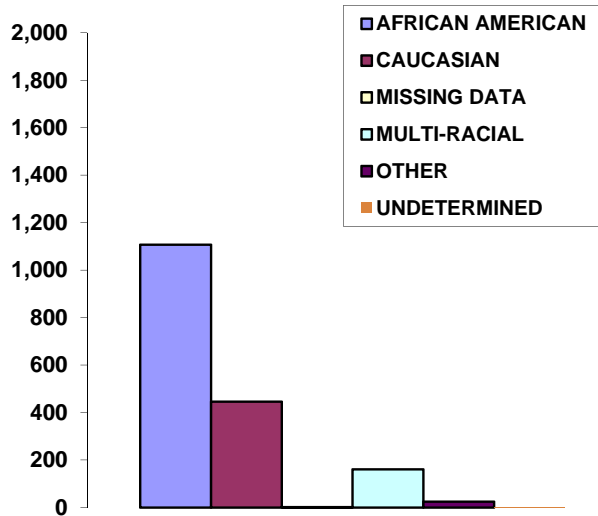


**OUT OF COUNTY PLACEMENTS AS OF 12/31/2015**

	Adoptive	Relative / Fictive Kin	Residential Center	Emergency Shelter	Foster Home	Group Home	Detention Facility	Independent Living	Licensed Medical Facility	TOTAL
<b>OUT OF COUNTY / IN OHIO</b>	19	64	36	0	380	4	3	1	1	508
<b>OUT OF STATE</b>	8	4	8	0	8	0	0	0	0	28

\* Contiguous counties include: Geauga, Lake, Lorain, Medina, Portage, Summit  
 \* 13 of the out-of-county foster home placements are relative/fictive kin providers

DEMOGRAPHICS: CHILDREN IN OUT-OF-HOME CARE  
DECEMBER 31, 2015



Race	Count	% Of Total
AFRICAN AMERICAN	1,107	63%
CAUCASIAN	446	26%
MISSING DATA	2	0%
MULTI-RACIAL	161	9%
OTHER	25	1%
UNDETERMINED	3	0%
<b>Total</b>	<b>1,744</b>	<b>100%</b>

Gender	Count	% Of Total
FEMALE	859	49%
MALE	884	51%
MISSING DATA	1	0%
<b>Total</b>	<b>1,744</b>	<b>100%</b>

Age Group	Count	% Of Total
GROUP A : 0 to 5	660	38%
GROUP B : 6 to 8	249	14%
GROUP C : 9 to 12	252	14%
GROUP D : 13 to 15	231	13%
GROUP E : 16 to 17	224	13%
GROUP F : 18 and Over	128	7%
MISSING DATA	0	0%
<b>Total</b>	<b>1,744</b>	<b>100%</b>

Race / 2014	% Of Total 2014
AFRICAN AMERICAN	65%
CAUCASIAN	27%
MULTI-RACIAL	7%
OTHER	1%
UNDETERMINED	0%

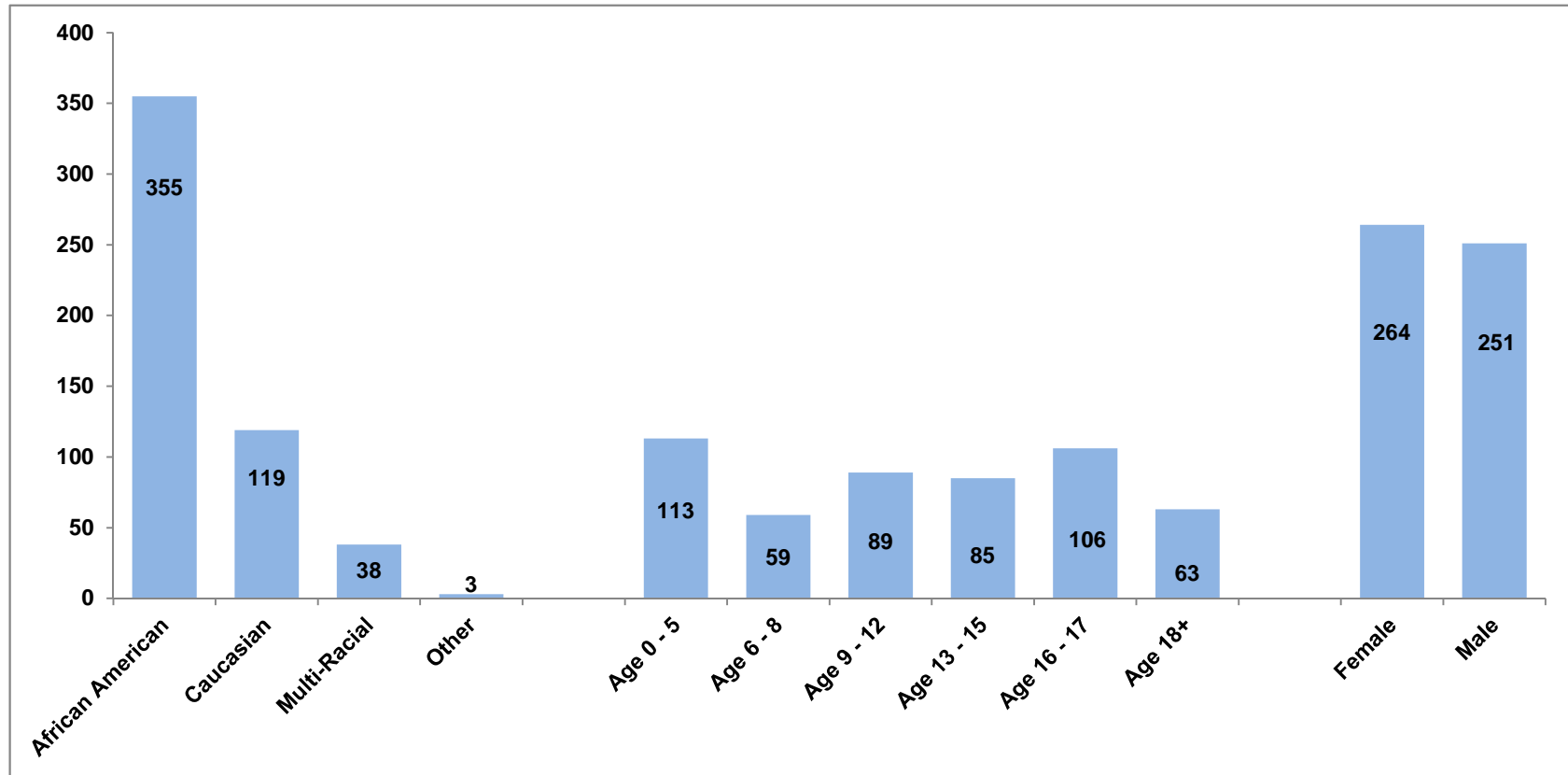
Gender / 2014	% Of Total 2014
FEMALE	48%
MALE	52%
MISSING DATA	0%

Age Group / 2014	% Of Total 2014
GROUP A : 0 to 5	37%
GROUP B : 6 to 8	12%
GROUP C : 9 to 12	13%
GROUP D : 13 to 15	14%
GROUP E : 16 to 17	15%
GROUP F : 18 and Over	9%
MISSING DATA	0%

\* Race for persons under age 18 / Cuyahoga County  
53% Caucasian / 37% African American / 10% Other - more than 1 race

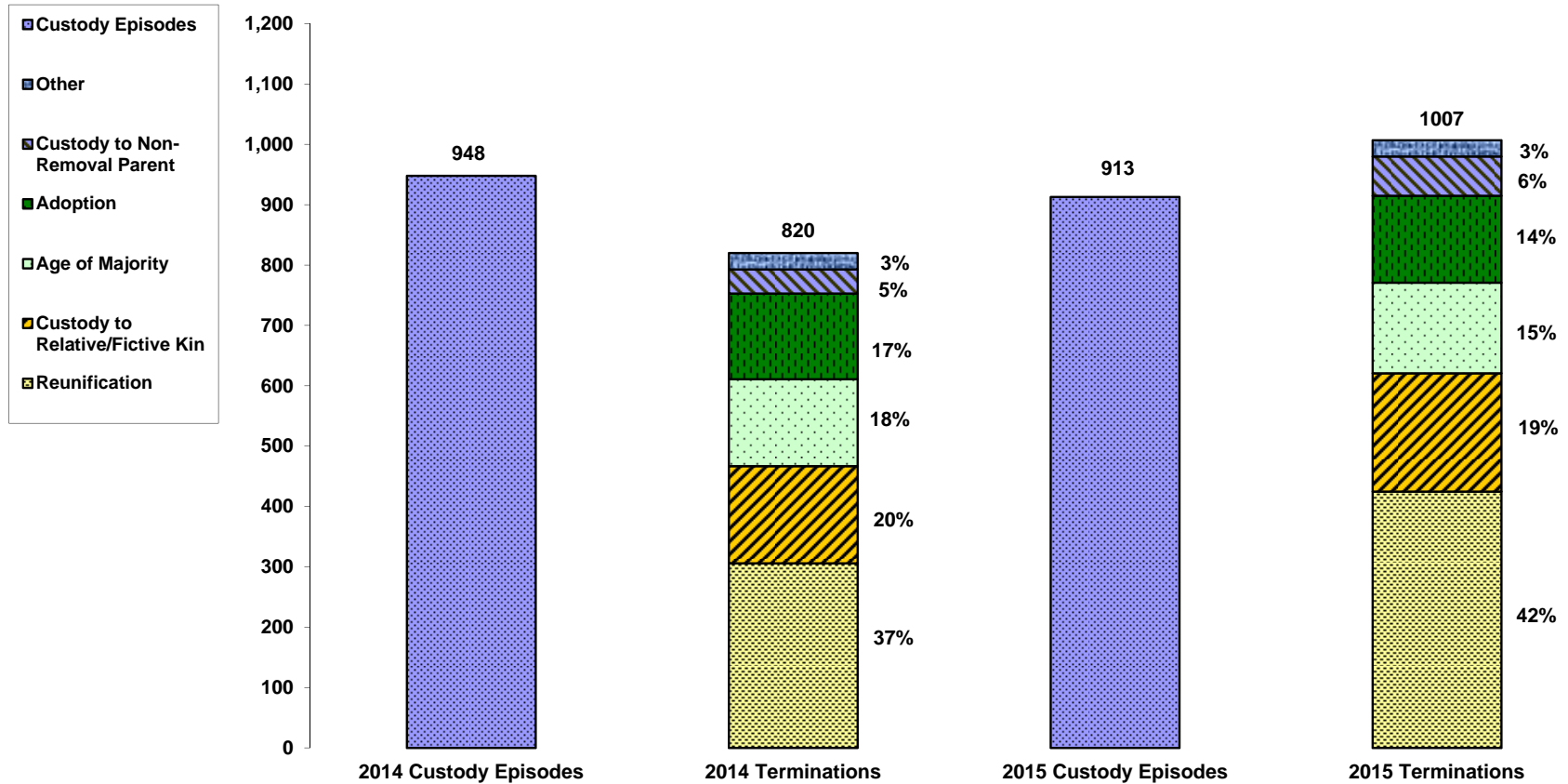
\* Source: U.S Bureau of the Census, 2010 Census, Summary File 1, PCT12A, PCT12B, PCT12C, PCT12D, PCT12E, PCT12F, PCT12G, and PCT12H.

### CHILDREN WAITING FOR ADOPTION DECEMBER 31, 2015



\* Count of children in permanent custody status who are not placed in an adoptive home

**CUSTODY EPISODES / TERMINATIONS  
JANUARY - DECEMBER  
2014 / 2015**



	Reunification	Custody to Relative / Fictive Kin	Age of Majority	Adoption	Custody To Non-Removal Parent	* Other
2014	306	161	144	142	40	27
2015	425	196	150	144	65	27

\* Other includes, Child AWOL > 30 days, child fatality, and custody to another agency.

**TOTAL # of CHILDREN EXITING CUSTODY BY AGE OF MAJORITY  
BY FINAL CUSTODY TYPE / AGE AT EPISODE BEGINNING / LENGTH OF STAY  
JANUARY - DECEMBER 2015**

Month	Permanent Commitment	PPLA	Other	Total # Children Exiting by Emancipation For Month
January	1	4	3	8
February	2	6	1	9
March	5	2	1	8
April	5	6	3	14
May	4	1	0	5
June	9	7	1	17
July	6	6	4	16
August	9	9	5	23
September	7	7	4	18
October	7	6	4	17
November	7	2	2	11
December	3	0	1	4
<b>YTD Total</b>	<b>65</b>	<b>56</b>	<b>29</b>	<b>150</b>

\* Number of children exiting by age of majority in 2014 = 144

**Age of Children Who Exited by Emancipation  
At the Time Custody Episode Began**

Age at Custody Start	Count	%
Under Age 12	37	25%
Age 13 to 14	31	21%
Age 15 to 16	48	32%
Age 17 or >	34	22%
<b>Total</b>	<b>150</b>	

**Number of Custody Months For Children  
Exiting By Age of Majority**

Months in Custody	Count	%
0-12	18	12%
13-24	15	10%
25-36	23	15%
37 or >	94	63%
<b>Total</b>	<b>150</b>	

NOTE: count for past months are updated with each new report as SACWIS historical data may change causing data to differ from those in previous versions of this report.